



TRANSPORT ACCRED. MOBILE APP GUIDE

JUNE 2024

EN GAMES WIDE OPEN GAMES
S WIDE OPEN GAMES WIDE O
Y OUVRONS GRAND LES JEUX O
RAND LES JEUX OUVRONS GR
PEN GAMES WIDE OPEN GAME
S WIDE OPEN GAMES WIDE O
Y OUVRONS GRAND LES JEUX O
RAND LES JEUX OUVRONS GR
PEN GAMES WIDE OPEN GAME
S WIDE OPEN GAMES WIDE O
Y OUVRONS GRAND LES JEUX O
RAND LES JEUX OUVRONS GR
PEN GAMES WIDE OPEN GAME
S WIDE OPEN GAMES WIDE O
Y OUVRONS GRAND LES JEUX O

C *CONTENTS*

1	INTRODUCTION	2
2	DOWNLOAD THE APPLICATION	4
2.1	USER STATUS	5
2.2	DOWNLOAD ON THE STORES	5
3	SIGN-IN AND LOG-IN	6
3.1	SIGN-IN	7
3.2	LOG-IN	8

4	RESEARCH AN ITINERARY	10
5	BOOK A TX SERVICE (IF ELIGIBLE)	18
5.1	TXB IN PARIS	19
5.2	TXB IN CHC	20
5.3	TXB WITH A TX UPGRADE	21
5.4	"MY BOOKING" MENU	22
6	OTHER FEATURES	23

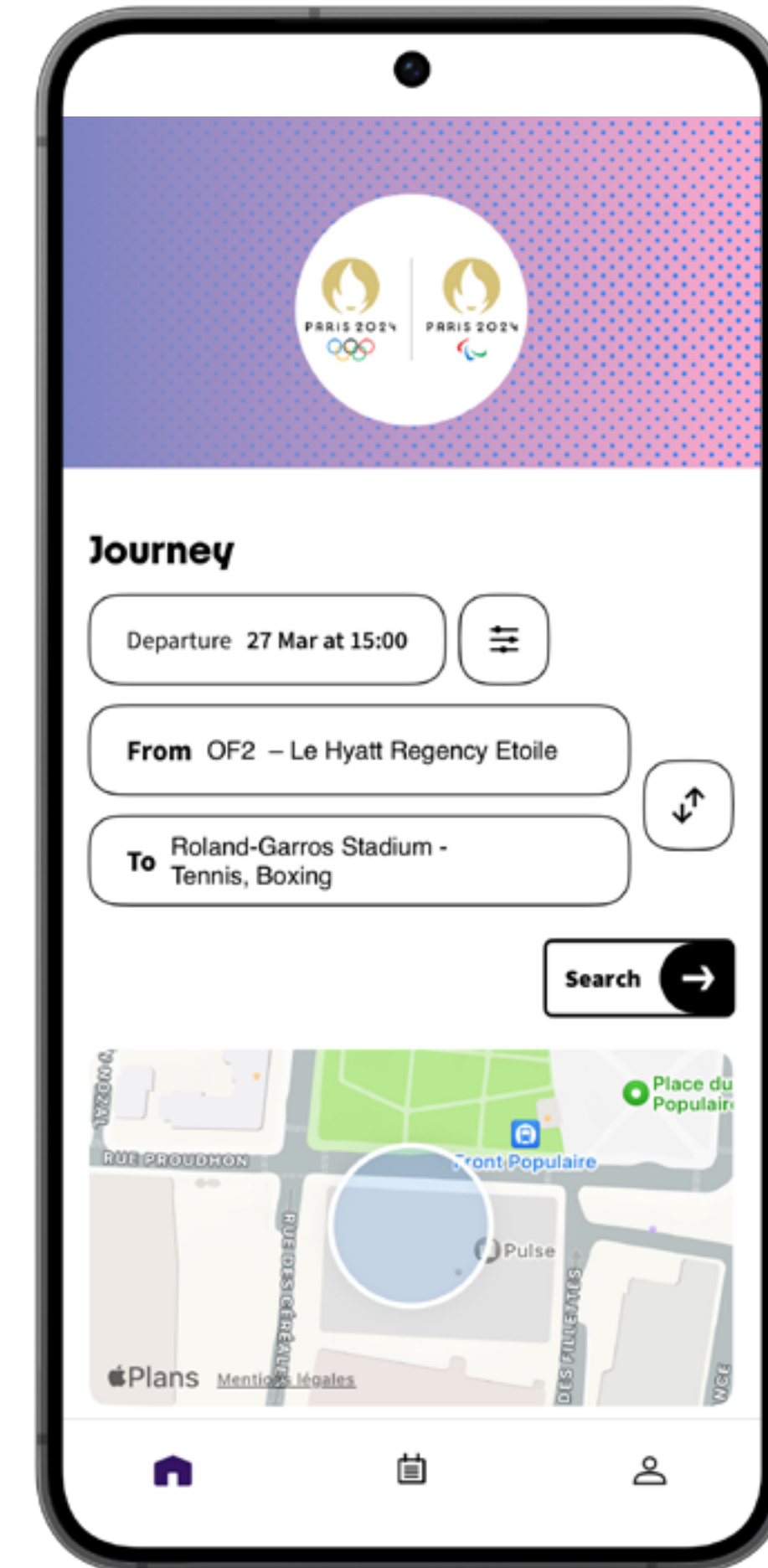
1

INTRODUCTION

Finding the best way to navigate to venues and accommodations in the host city for the Olympic & Paralympic Games can be challenging at times.

Therefore, Paris 2024 is happy to help you going around the Olympic cities by providing to its accredited populations an application called **Paris 2024 Transport Accred**: here is its user guide. The Paris 2024 Olympic and Paralympic sites will be located in and outside of Paris, and in some Co-Host Cities (CHC); therefore, every step of the user journey will be depicted to pinpoint every element you may need to know, in order to enjoy the best Games Transport experience.

Depending on your user status, you will either have to download the application or you will already have it on your phone. After signing in, you will have access to several services, such as itinerary searches (in Paris area), TX booking (if eligible), network maps (Transport Public (TP) and Transport Connect (TC) for Paris and Co Host Cities), booking with a TX Upgrade, redirection to a Taxi platform and an FAQ.



2

DOWNLOAD THE APPLICATION

- **2.1 USER STATUS** p 5
- **2.2 DOWNLOAD ON THE STORES** p 5

2.1 USER STATUS

As this application has been designed for accredited populations only, its use and therefore its downloading is only available for the public specified before.

There are two alternatives, depending on the user status:

1. Athletes: will be given cellphones which will already be equipped with the application;
2. Any other accredited population: will be able to download the application Paris 2024 Transport Accred. from early July, available on both Play and Apple Stores.

2.2 DOWNLOAD ON THE STORES

The Paris 2024 Transport Accred. App is downloadable from the Apple Store and the Play Store. The only requirement is to have an account on those platforms; then, download the application just like any other. The compatible iOS and Android systems are specified on the application information tab. The application is available in several languages: French, English and Spanish.



3

SIGN-IN AND LOG-IN

- **3.1 SIGN-IN**..... p 7
- **3.2 LOG-IN**..... p 8

3.1 SIGN-IN



1 Scroll down and press
“Register with my
accreditation”

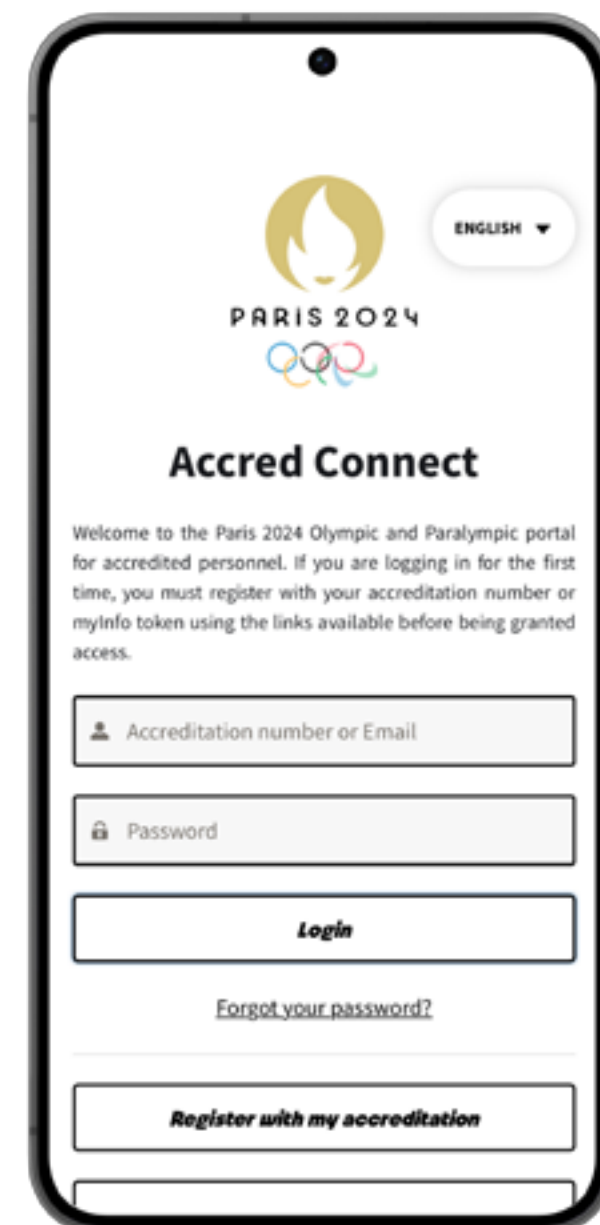
2 Fill it in with your Accred. Number
(that you would have been given
previously), Security Code and email

The accreditation number is a number of 7 digits, located on the front and on the back of your accreditation. The Security Code is located on the back of your accreditation, under the accreditation number. It is the last four characters of the code displayed.

Then, after filling the page with your information, you will receive an email sent to the mail address you just used, in order to verify your account. Check on this email, click on the verification link, create your password and therefore verify your account.

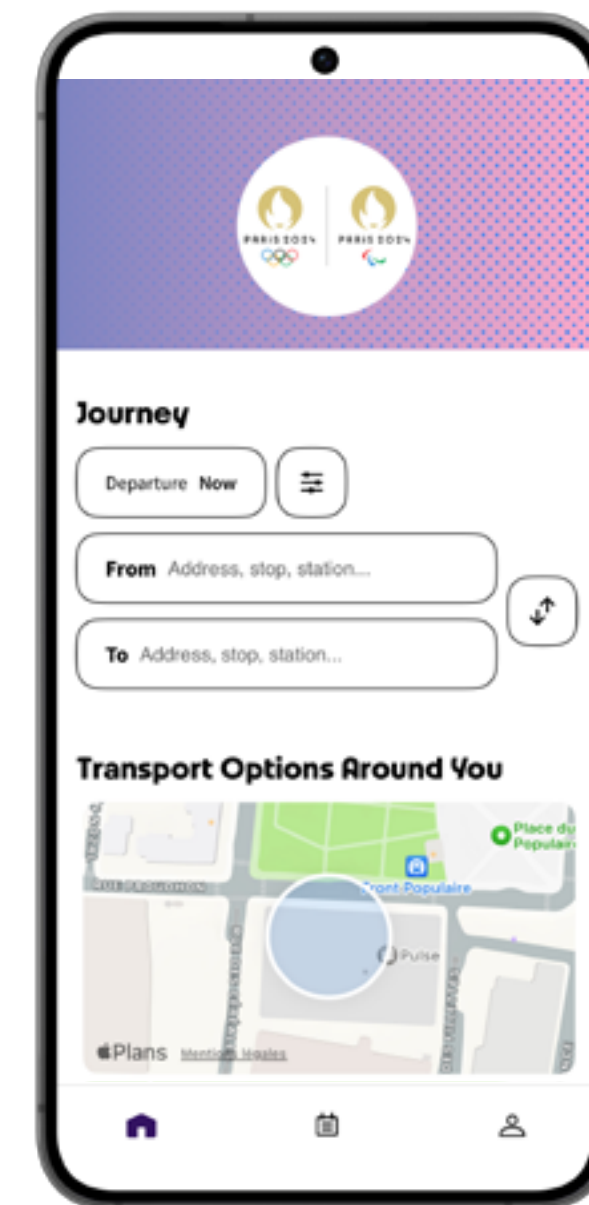
3.2 LOG-IN

Once you have filled in all your information on (2), you will reach the welcome page of the application (3). You just have to log in once. So, when you will launch the application again, your logging data would have been saved and you will directly reach the welcome page (3).



2

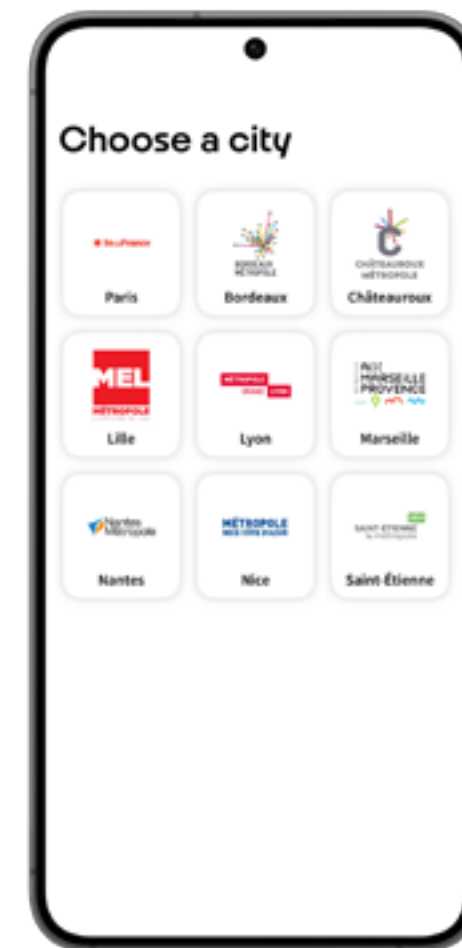
Log-in within your information



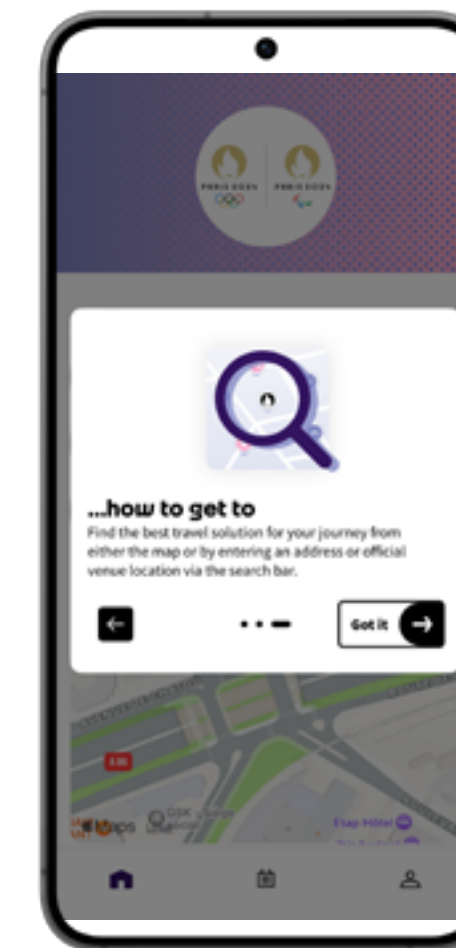
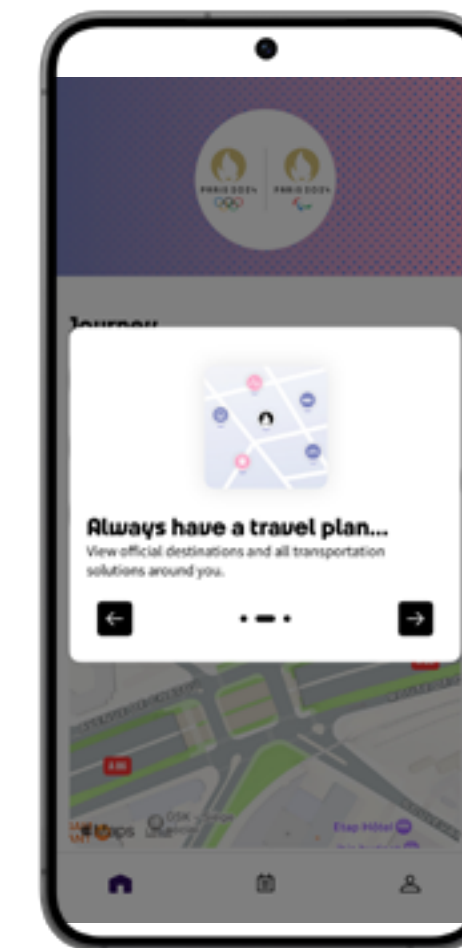
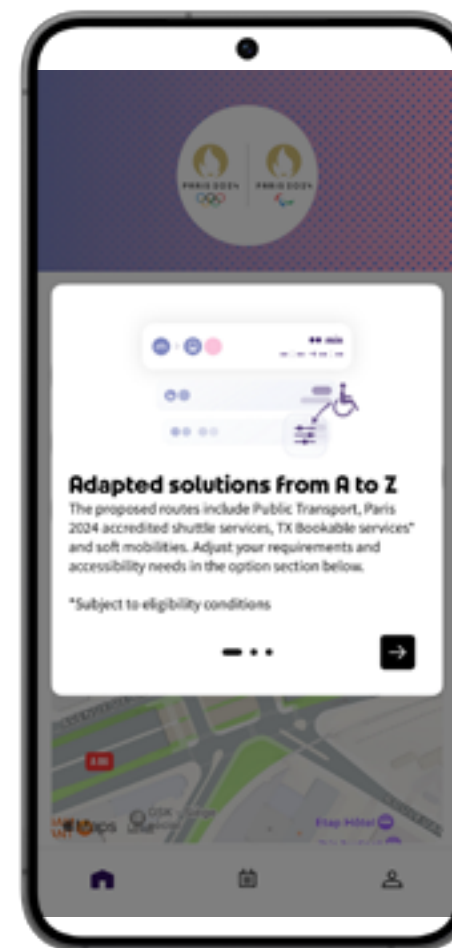
3

Welcome page

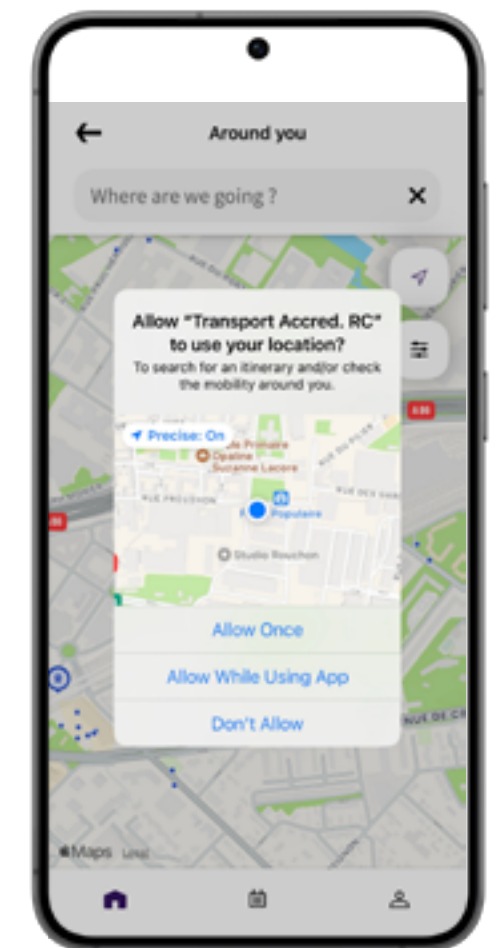
Once launching the application, the user is asked to accept the GCU (General Conditions of Use) on a pop-up window. Then, asked to choose the city he is located in, among the following: Paris, Bordeaux, Châteauroux, Lille, Lyon, Marseille, Nantes, Nice, Saint-Etienne. A quick tutorial (3 slides) is displayed, scroll left 2 times and press “Got it” to land in the home page. Depending on the city selected, the home page will contain a little map showing the user’s current location; and either a research of itinerary menu, or a TX Booking menu (if eligible).



Select the city
you are in



Slide through the different pages
of the application tutorial



Accept the
geolocalisation

- The app is available in three languages: French, Spanish and English. If the language in your device is French or Spanish then the app will be automatically configured to one of these two languages, if not then the app by default will be configured in English
- Once logged in, you don't need to log in again for 30 days



***RESEARCH
AN ITINERARY***

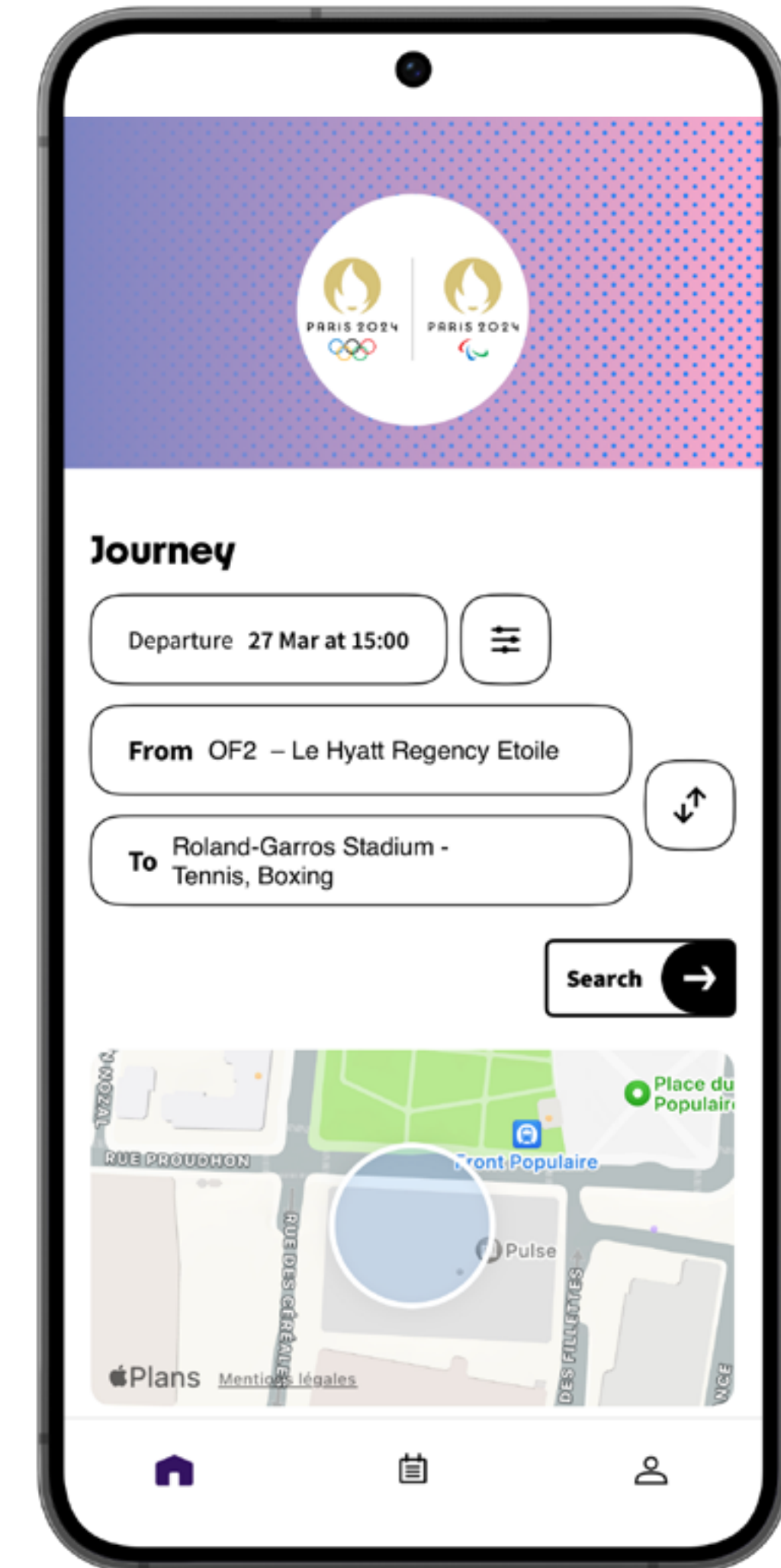
One of the main objectives of the Paris 2024 Transport Accred. App is to provide the user with itinerary research (IR).

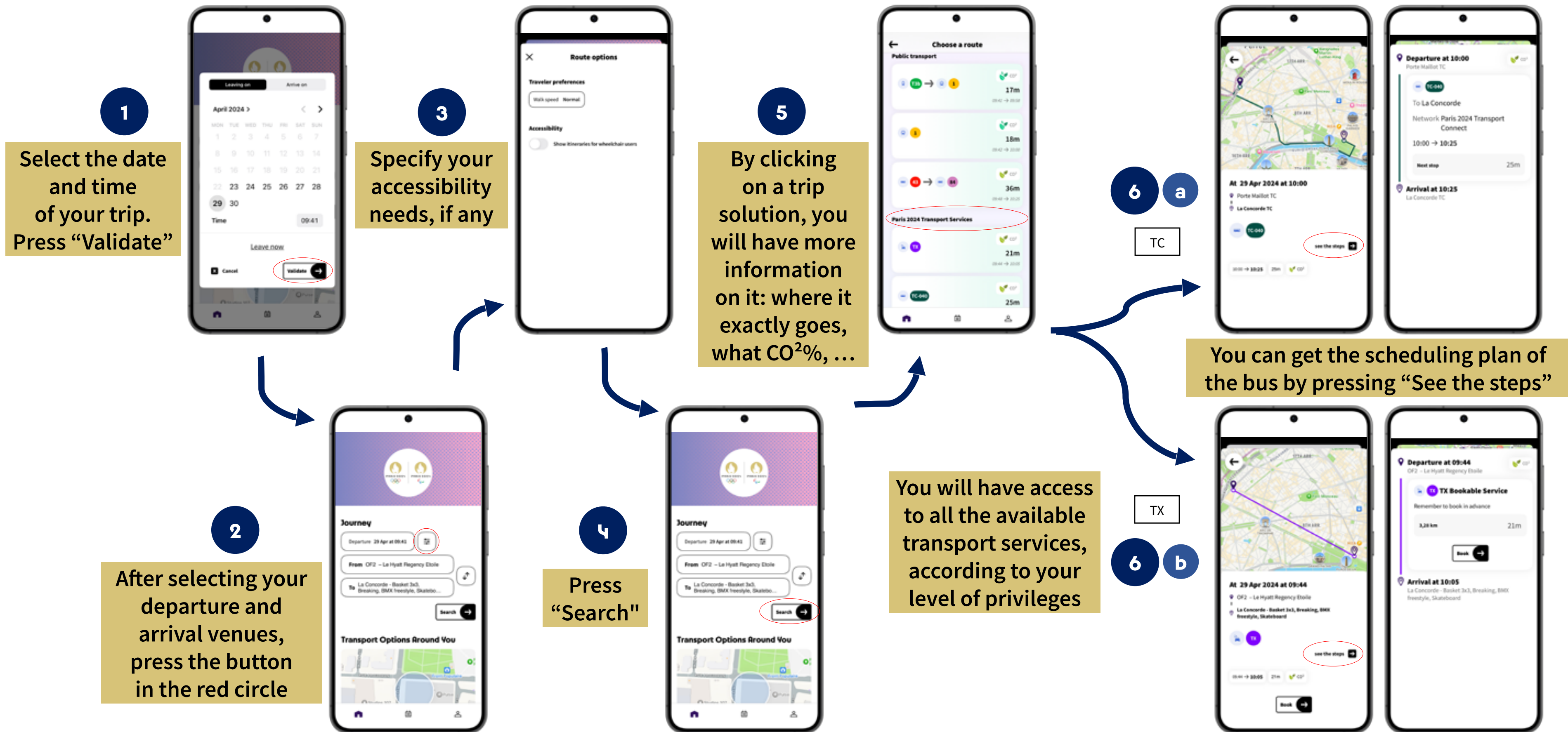
It is necessary to highlight the fact that this service is only available in the area of Paris; therefore, if the city you selected is not “Paris”, this home page will not contain an itinerary research menu. So, after logging in and selecting “Paris”, you will reach the home page, already redirecting on IR.

You can modify your research on several topics, such as: time of departure/arrival, location of departure/arrival, accessibility. Search results will provide users with several trip options using scheduled Public Transport (TP) (Metro, RER, Tram & Bus) services, Transport Connect (TC) lines, Walking and Cycling routes (and eventually Transport Federations (TF) and Transport Athlete (TA) if eligible).

Finally, here are some takeaways on how the IR works:

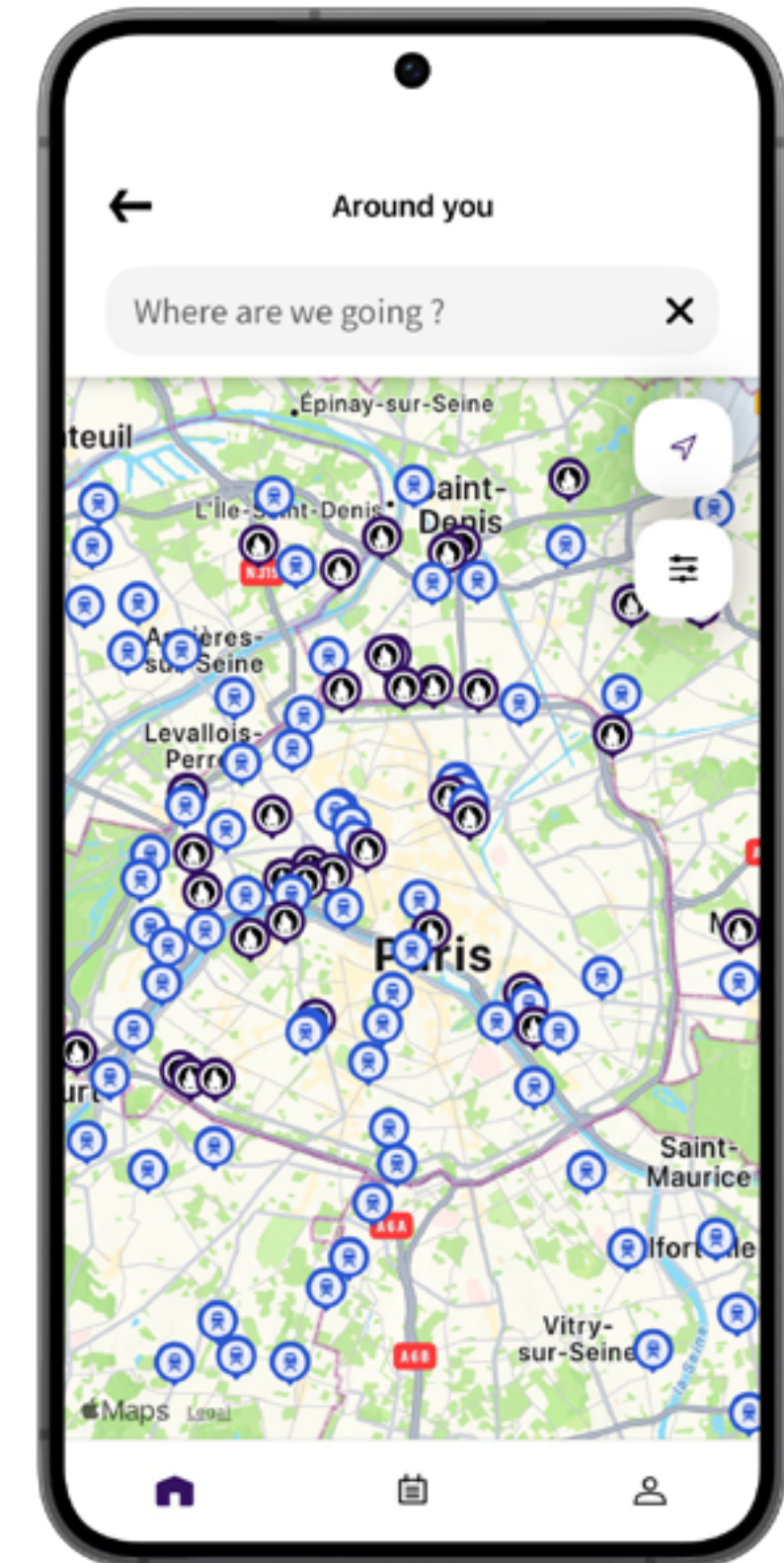
- When typing, the menu automatically suggests destinations (autocomplete)
- The official destinations always come on top of the results
- The results page displays an estimated trip schedule and the available transports' upcoming departures
- When looking for a competition site, typing the sport's name is efficient
- The “on foot” part of the trips may not be 100% accurate sometimes, due to adjustments on the on-site's operations: always keep in mind that the reliable information is the one on the signage displayed on and near the sites



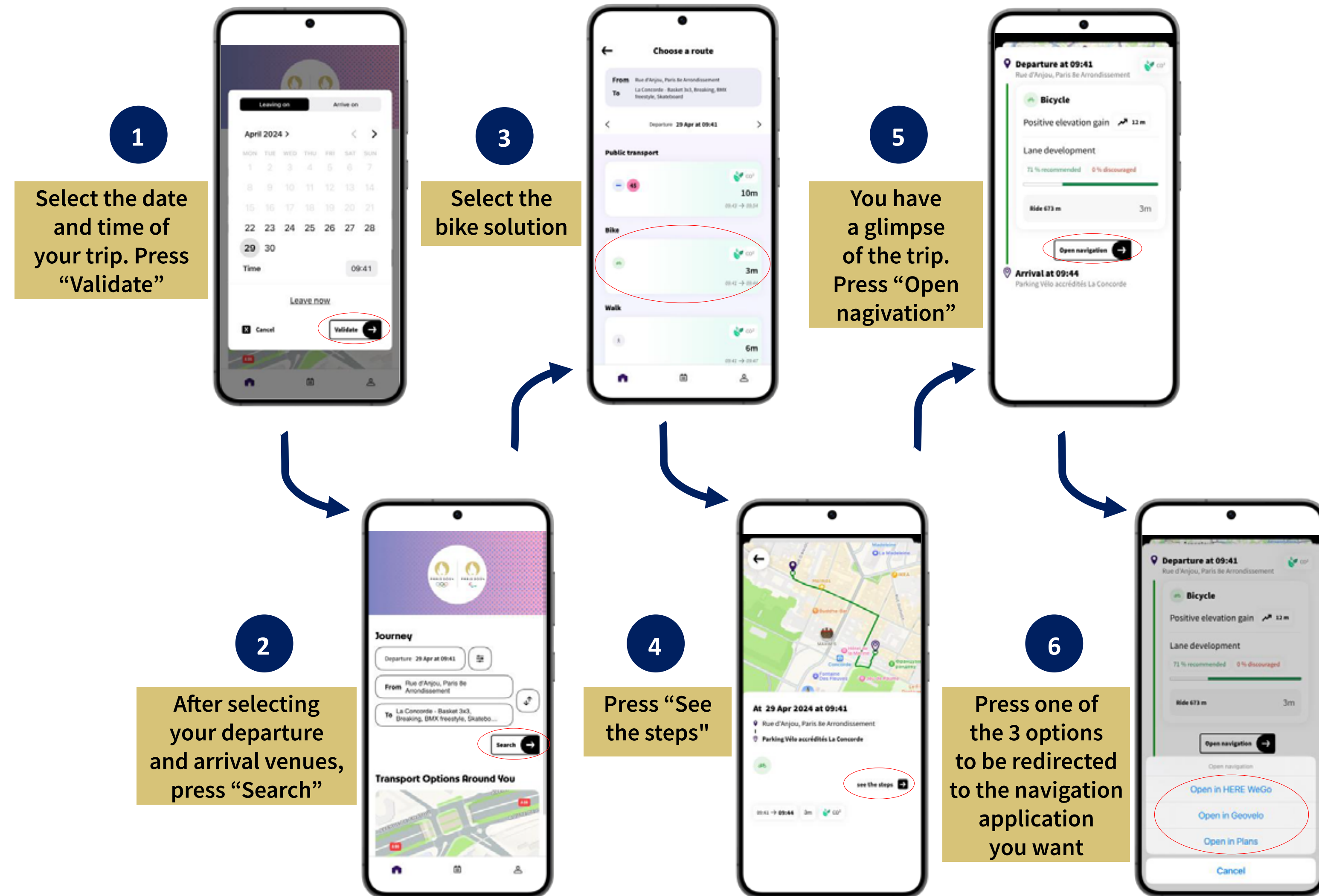


Pressing on the map below “Transport Options Around You” allows the user to visualize public transports nearby and its schedule. Also, POI are displayed, and the IR is made easier (press “Itinerary”). Finally, you can decide to filter what is shown on the map.

Also, this is what the map looks like once zoomed out:

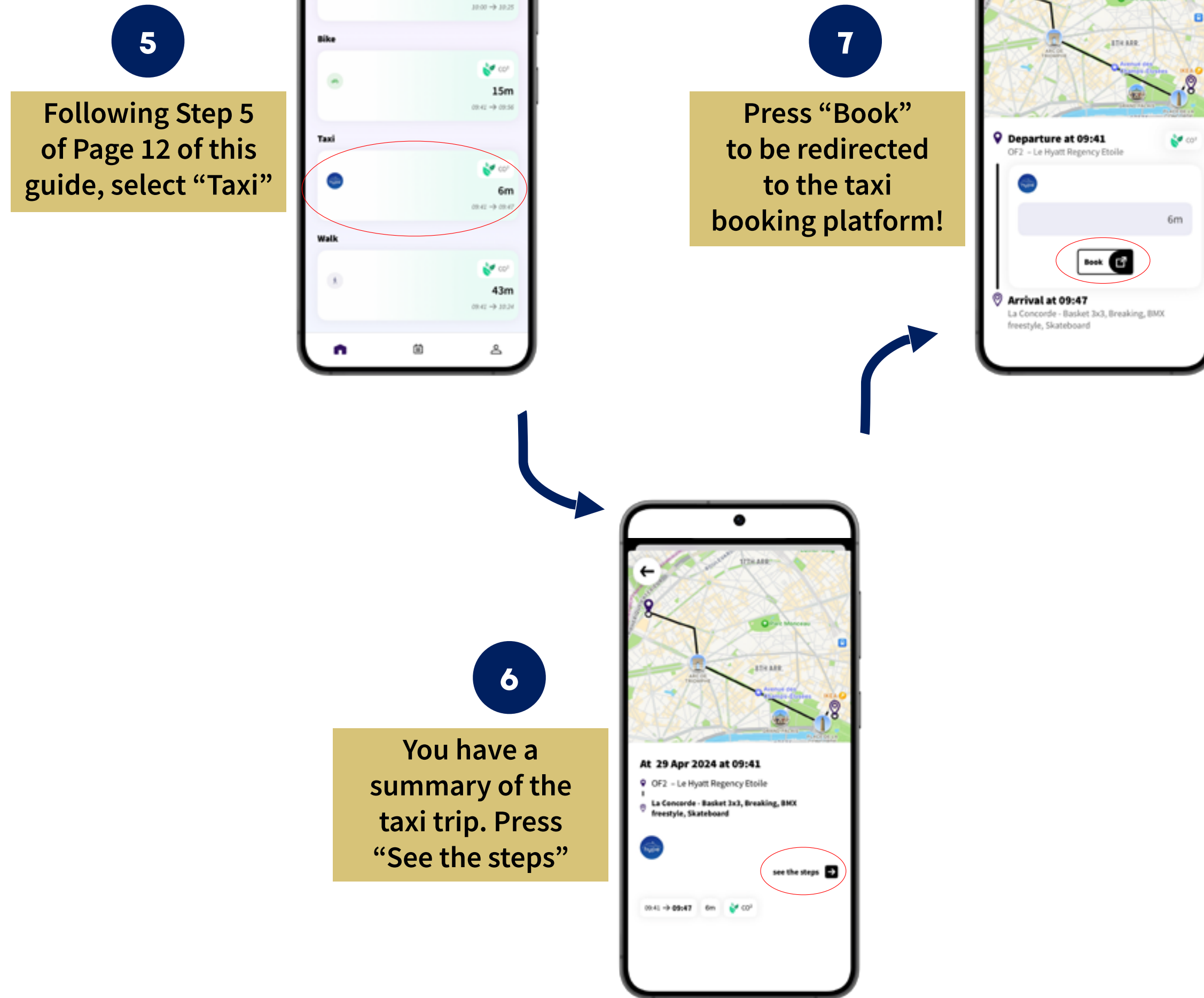


Then, several other options do exist, such as going on a bike ride or walking. In both cases, you will be redirected on an external application (Here, GéoVélo, Maps and Plan) ; we recommend you to download GéoVélo in order to get the most relevant itineraries. Here is below an instance with a bike ride:

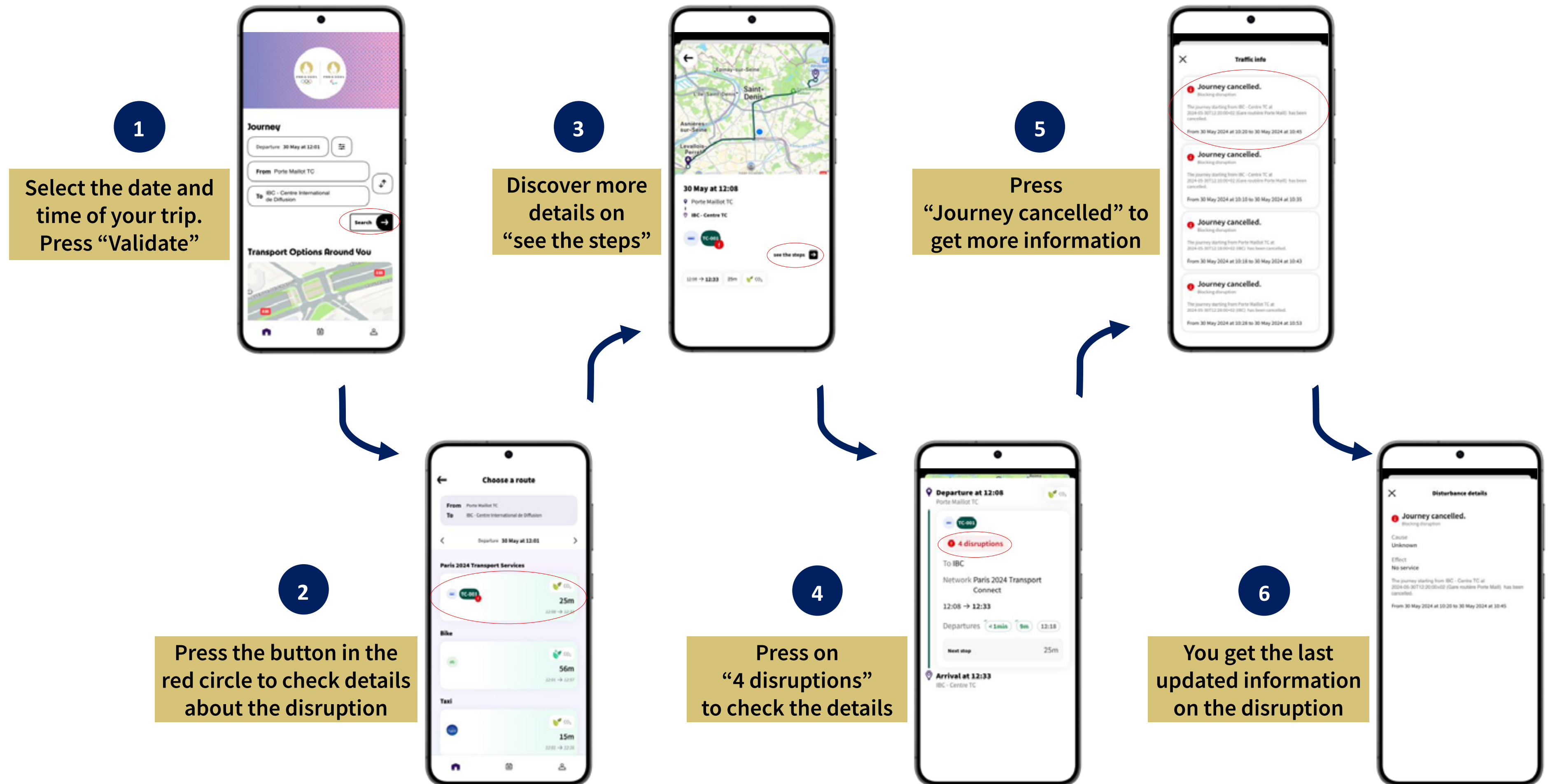


Please note that once being redirected on the external navigation application, you may have to log in on it.

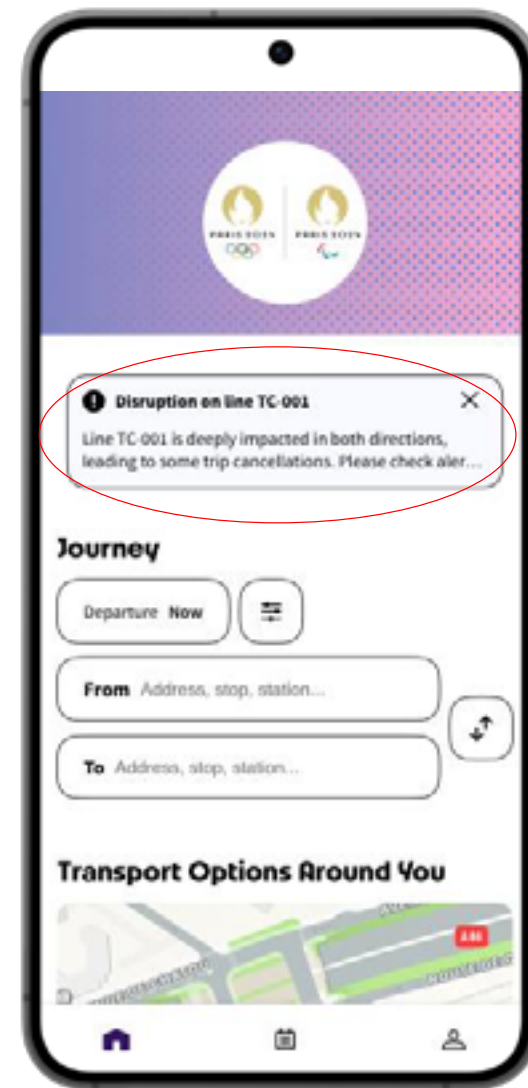
Finally, choosing the “taxi” section will redirect you to the official partner of Paris 2024 for Taxi services in Paris.



In addition to all the previous options presented in this part, some disruptions may occur on the transport network. If so, the Paris 2024 Transport Accred. App adapts and displays real time information on the itinerary research via a red exclamation point dot on the disrupted TP line or T-service. Then, by pressing on this dot, you get more details on what is occurring.



In case of significant messages to be shared with all the users, banners can be launched and appear on the welcome page of the application, providing concise and quick information about an ongoing or an anticipated disruption.



Disruption on the welcome page



Details on the disruption

5

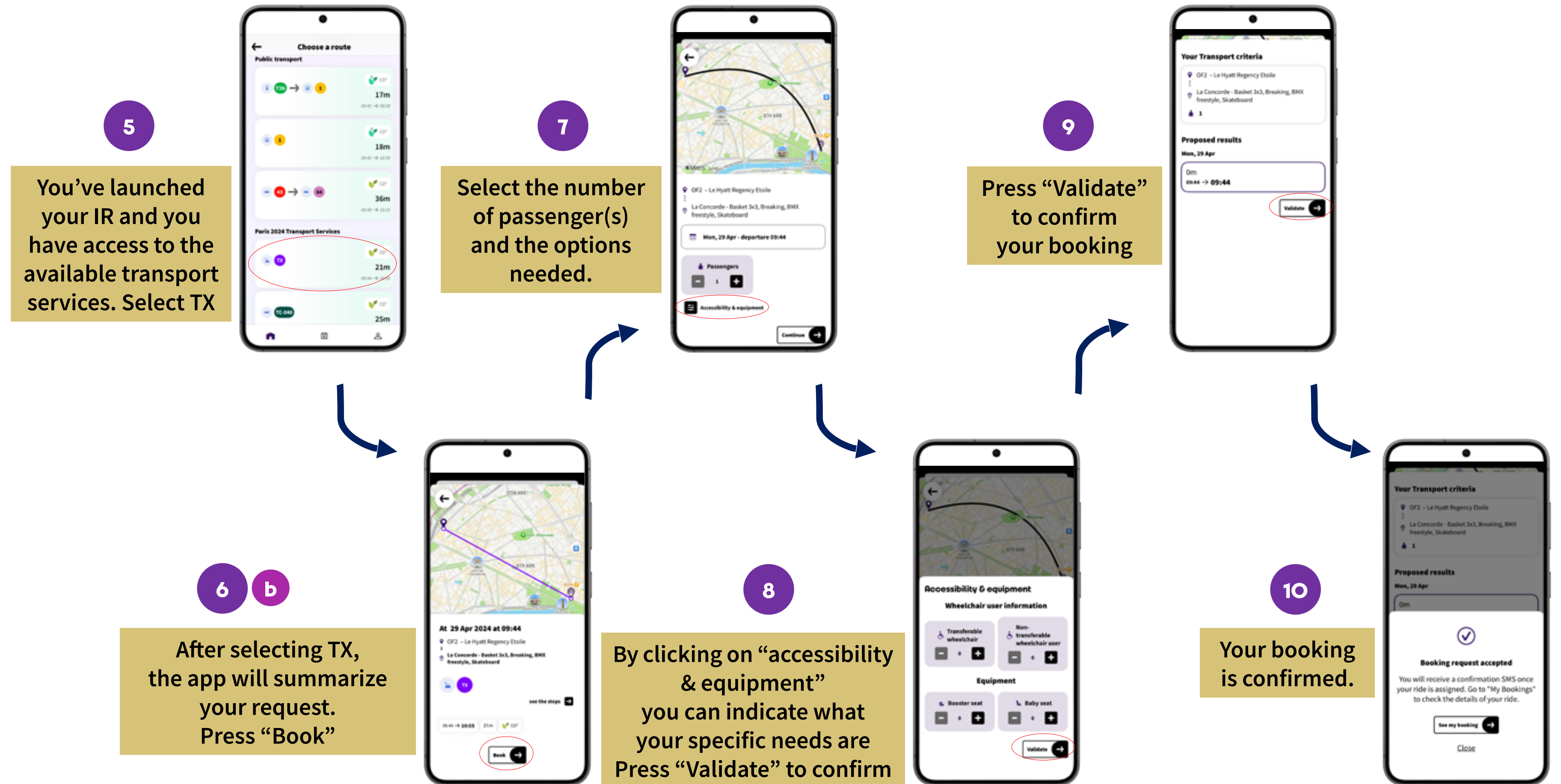
BOOK A TX SERVICE (IF ELIGIBLE)

- **5.1 TXB IN PARIS** p 19
- **5.2 TXB IN CHC** p 20
- **5.3 TXB WITH A TX UPGRADE** p 21
- **5.4 "MY BOOKING" MENU** p 22

Once your itinerary research is done, you'll have access to all your available transport services. TX Bookable Service (TXB) is a bookable transport system orderable 2 hours before the drive. To gather more information about it, please refer to the section of your client guide explaining this service in details.

It is necessary to mention the fact that you have to fill your phone number in, in order to get updates and messages from the TXB driver. Coming back to step 5 of the previous part about IR, here is how to book a TXB:

5.1 TXB IN PARIS



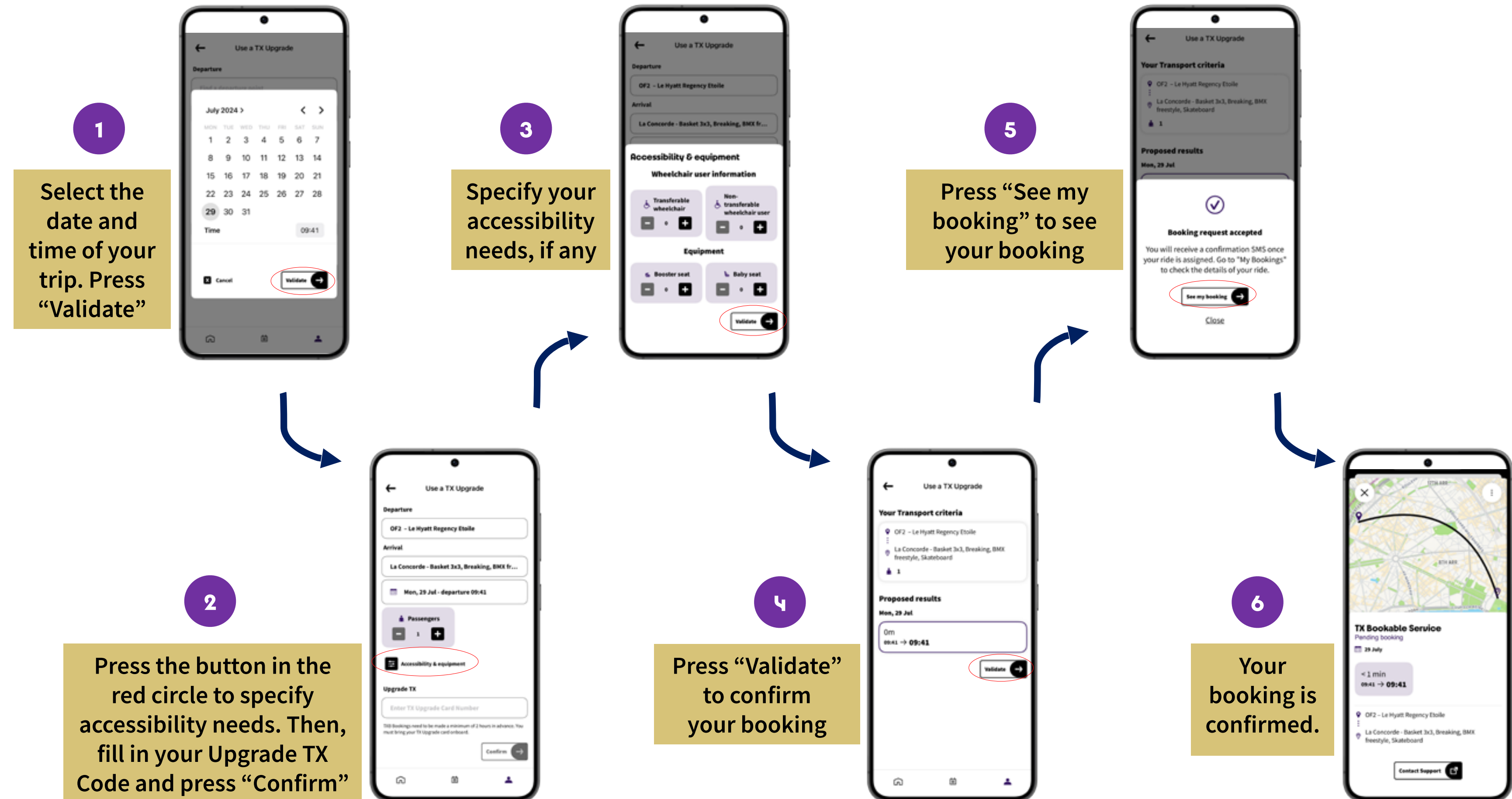
5.2 TXB IN CHC

Here is how TXB works for CHC:



5.3 TXB WITH A TX UPGRADE

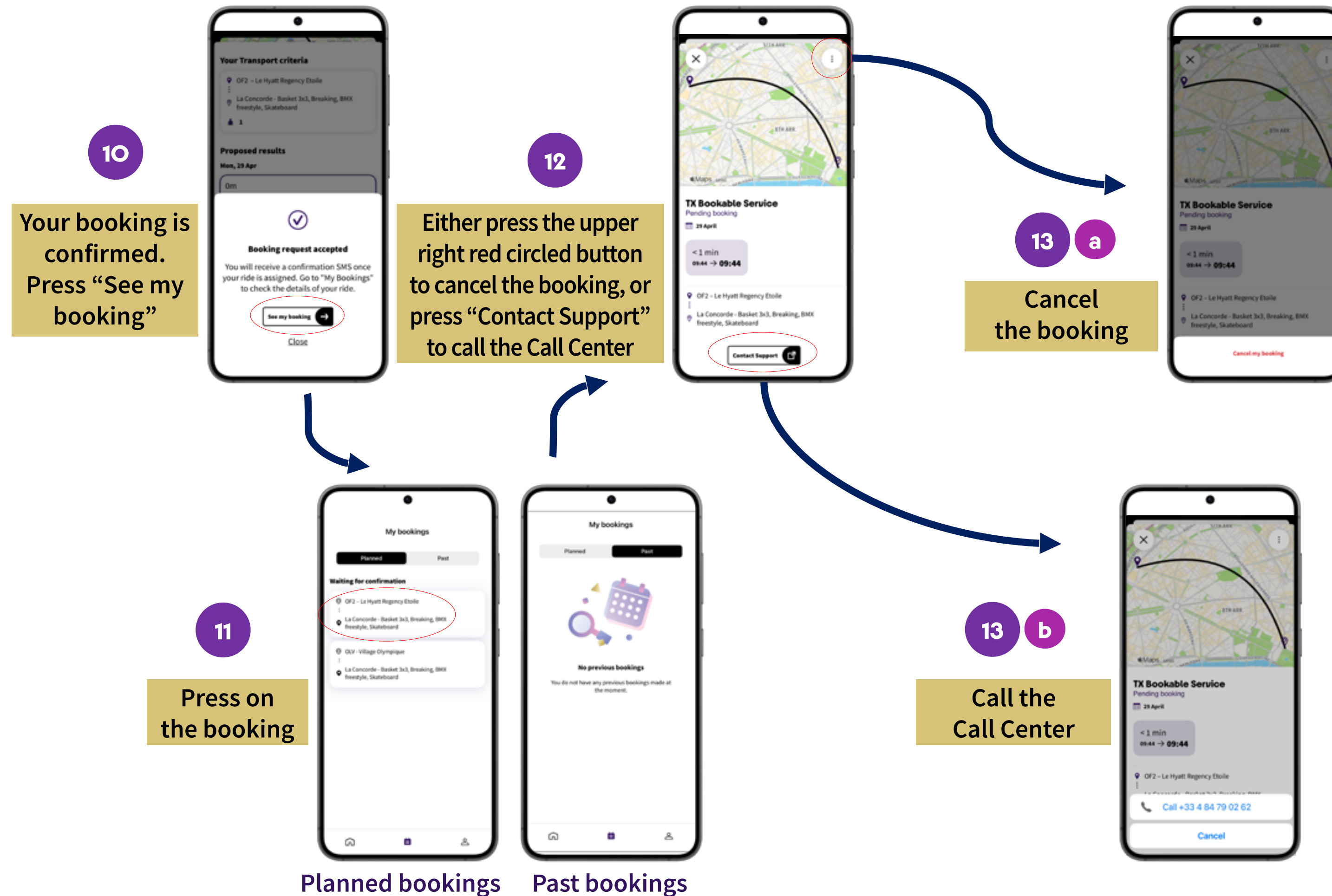
Also, from the third tab (cf. part 6. "Other features"), the "TX Upgrade" feature allows you to book a TX with an upgrade, and is available if you have been given the right to have access to it. You will have to add your accreditation number to obtain the TXB right and will need to have the TX Upgrade Card with you. Here is how it works:

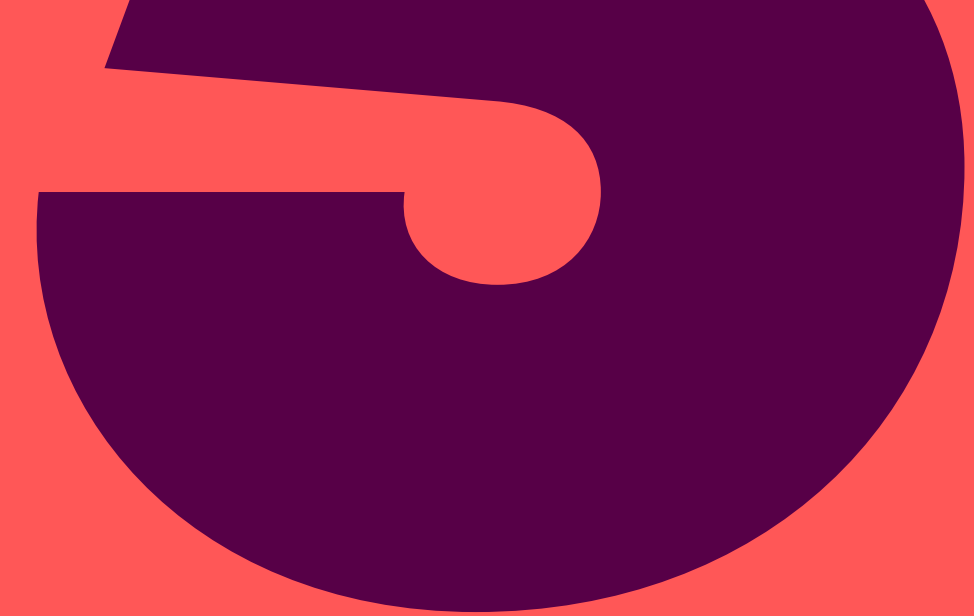


5.4 "MY BOOKING" MENU

On the application, the middle tab will provide a "My booking" menu, displaying all your planned and past TX bookings. On this page you can have details on your booking status: upcoming booking, confirmed, driver on road, onboard, completed, cancelled.

Also, by pressing on the booking, you can cancel it -try to cancel as soon as you know you won't use it and reach out to the call center.





OTHER FEATURES

These features are accessible by touching the right icon of the bottom bar.

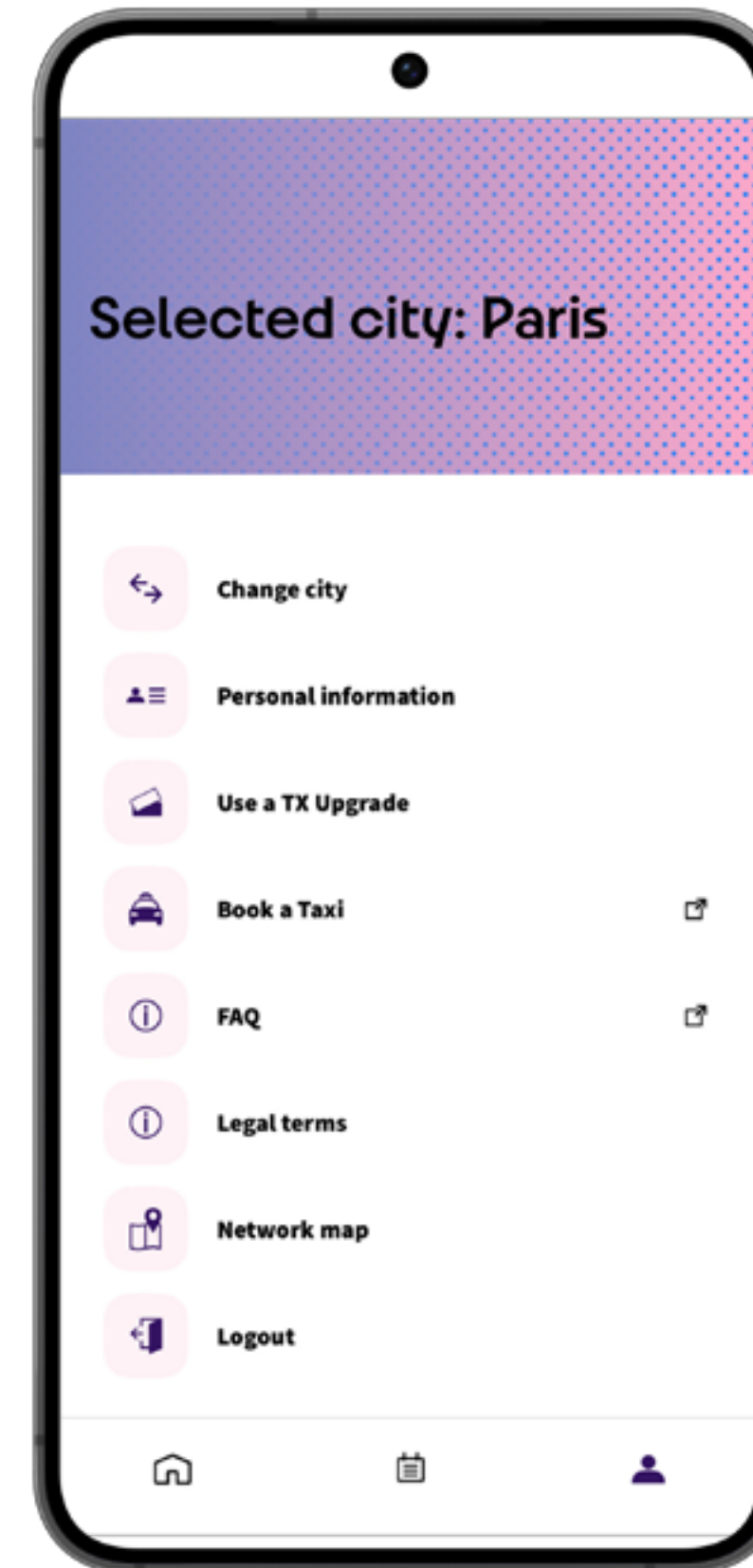
A FAQ (Frequently asked questions) page is available on the application, on the third tab. It will redirect to an external page on the web, containing all the questions that may arise while using the application (Transport on Demand (TX), Transport Public (TP), ...).

This third tab on the Paris 2024 Transport Accred. App also allows you to:

- Change the application configuration from one Olympic city to another;
- Verify your personal information;
- Use a TX Upgrade (if you have the right to have access to it);
- Book a Taxi (via a redirection on the taxi section of the FAQ);
- Check on the legal terms;
- Check on the network maps (static TP + TC maps from the Olympic cities);
- Logout from the application.

The “Personal information” section enables the user to fill in their phone number, in order to receive the SMS sent by the TXB services once ordered. Finally, the network maps are static maps displaying the TP and TC lines of Paris and the CHC.

<https://transport-faq.paris2024.org>





**PARIS 2024
THANKS ITS
PARTNERS
FOR THEIR
DEDICATION.**

Worldwide Partners



Premium Partners



Official Partners



Official Supporters

ABEO Air Liquide Airweave Aquatique Show Arena CRYSTAL Doublet Wasserman
 DXC Technology Egis Enedis ES Global Eviden Fitness Park Fnac Darty Garden Gourmet
 Gerflor Groupe RATP Highfield Hype La Poste Loxam Lyreco Miko Mondo MTD
 Myrtha Pools OnePlan Optic 2000 Ottobock Randstad Rapiscan Systems Re-uz RGS Events
 Saint-Gobain Salesforce SCC SEDIF SLX SNCF Sodexo Live! Technogym Terrailon
 Thermo Fisher Scientific Tourtel Twist VINCI Viparis Westfield



www.paris2024.org