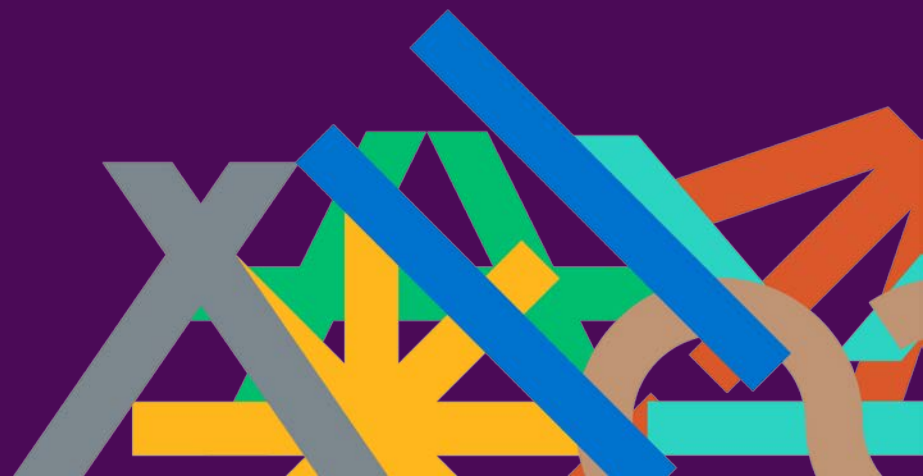




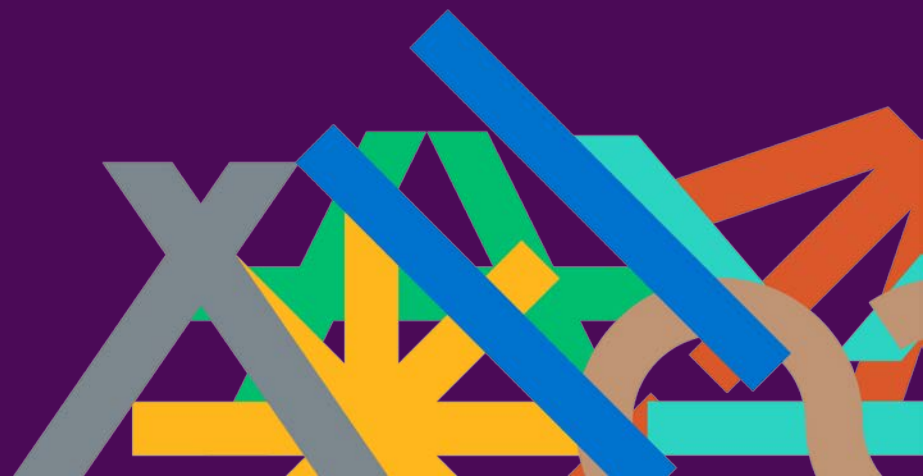
# Para Equestrian Forum 2022





# Day 2 - Sport Structure

## 19 January 2022





# Housekeeping

- The Para Forum sessions will be recorded
- Participants are all muted and have no video
- Please write any questions in the Chat (“To: Everyone”). These will be answered in the Q&A session following each topic.
- Please use the Chat just for questions.
- During Q&A please “Raise Hand” to ask a question. You can be unmuted by the host to speak.



WELCOME

Sabrina Ibáñez

FEI Secretary General and APSO President





PARA EQUESTRIAN



# Sport Structure





## Structure of the Session 2

- Part 1 – presentations

Break

- Part 2 – Q&A sessions per subject



# FEI Definitions

CIM (Minor International Event) - CPEDI1\* and CPEDI2\*  
CIO (Official International Event)

Age Categories:

Children 12 - 14yr

Junior 14 - 18yr

Young Rider 16 - 21yr

U25 16 - 21yr



# Competition Structure

## Categories of Events:

- CPEDI 1\* - 3\*
- CPEDIOs
- Series
- Championships
- Paralympic Games

## Considerations:

- Level of Events
- Qualification requirements
- Tests to be ridden
- Officials Requirements





# Current CPEDI Sport Structure

Event	Tests to be ridden	Qualification within event	Age
CPEDI 1* (Minor Event)	<ul style="list-style-type: none"> <li>• Novice or Team Test</li> <li>• Team or Individual Test</li> <li>• Freestyle</li> </ul>		Minimum 14 years old
CPEDI 2* (Minor Event)	<ul style="list-style-type: none"> <li>• Novice or Team Test</li> <li>• Team or Individual Test</li> <li>• Freestyle</li> </ul>		Minimum 14 years old
CPEDI 3* (Major Event)	<ul style="list-style-type: none"> <li>• Team Test</li> <li>• Individual Test (2<sup>nd</sup> Team)</li> <li>• Freestyle</li> </ul>	60% to enter Freestyle	Minimum 14 years old
Championships	<ul style="list-style-type: none"> <li>• Para GP</li> <li>• Para GPS (team Medals)</li> <li>• Para FS</li> </ul>	PGP + PGPS = qualif for FS (60%)	Minimum 16 years old



# Current Sport Structure

- Very little progression between levels
- Very few CPEDI1\* and CPEDI2\* each year
- Almost all international Athletes competing together in CPEDI3\*
- Difficult for new Athletes to compete
- Difficult for developing countries to participate
- No incentive for OCs to hold lower levels
- Team competitions not harmonised with other FEI disciplines



PARA EQUESTRIAN

# Previous Forum Outcomes



# Previous Forum Outcomes

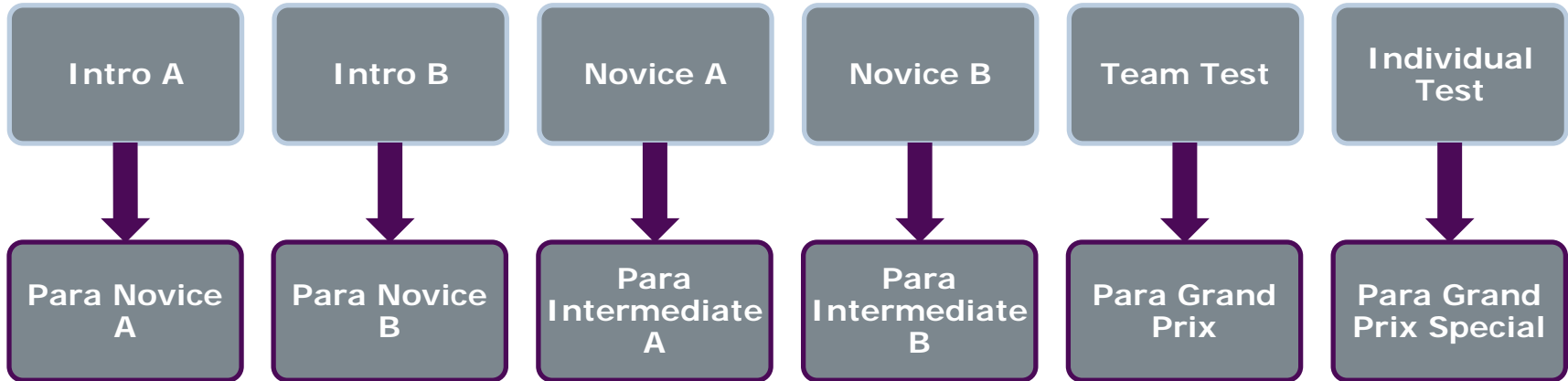
Event	Level	Tests	Officials	Notes
CPEDI 1 *	<ul style="list-style-type: none"> <li>Novice</li> </ul>	<ul style="list-style-type: none"> <li>Shorter tests (Intro?)</li> </ul>	<ul style="list-style-type: none"> <li>2 – 3 Judges</li> <li>Minimum 1 National and 1 FEI Judge</li> </ul>	<ul style="list-style-type: none"> <li>1 or 2 Days</li> <li>Testing Riding skills</li> <li>Borrowed Horses?</li> </ul>
CPEDI 2 *	<ul style="list-style-type: none"> <li>Intermediate</li> </ul>	<ul style="list-style-type: none"> <li>Novice Test A</li> <li>Novice Test B</li> </ul>	<ul style="list-style-type: none"> <li>Minimum 3 Judges</li> <li>Minimum 1 FEI Judge</li> </ul>	<ul style="list-style-type: none"> <li>2-3 days</li> <li>Reinforce Riding Skills</li> <li>Borrowed horses?</li> </ul>
CPEDI 3 *	<ul style="list-style-type: none"> <li>High</li> </ul>	<ul style="list-style-type: none"> <li>Current tests</li> </ul>	<ul style="list-style-type: none"> <li>5 Judges</li> </ul>	<ul style="list-style-type: none"> <li>No Team competitions below 3*</li> </ul>
CPEDIO4 *				<ul style="list-style-type: none"> <li>Teams/Nation Cup</li> </ul>
Championships	<ul style="list-style-type: none"> <li>Day 1 - all athletes in rebranded Team tests – Team medals</li> <li>Day 2 – all riders in rebranded Individual test – Individual medals</li> <li>Day 3 – top 8 from each Grade Freestyle test – Individual medals</li> </ul>			<ul style="list-style-type: none"> <li>Quality</li> <li>Rankings</li> </ul>



## Outcome from previous Forums – Youth

Barriers	Solutions
Lack of opportunities	Yearly Youth Ranking List
Appropriate tests	Recognition in competitions for age group(s)
No step from Therapy to Sport	Scale of scoring for age groups
Low numbers of Athletes	Judging based on skills development

# Proposed Test Names



# Lessons learned from other FEI Disciplines



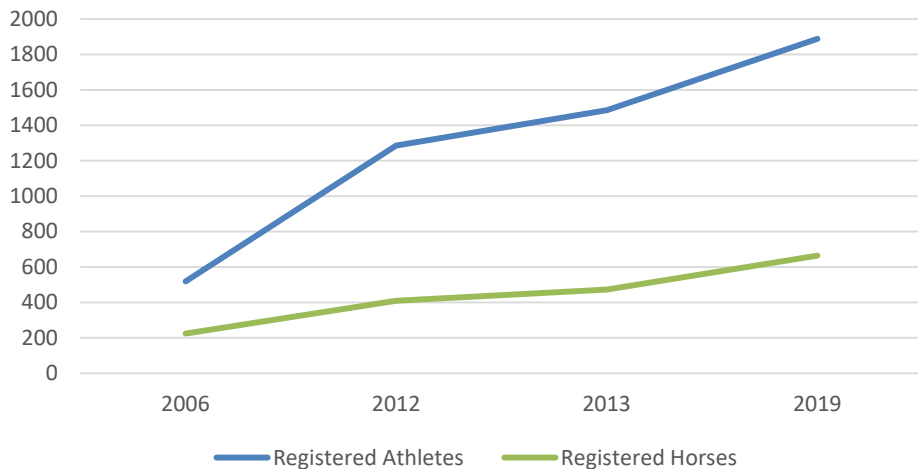
# Lessons learned from Vaulting

- Growth of numbers of Events per year (300% )
- More continents organising Events
- Increase in numbers of registered Athletes
- Increase in Officiating opportunities
- Improvement in quality of performances



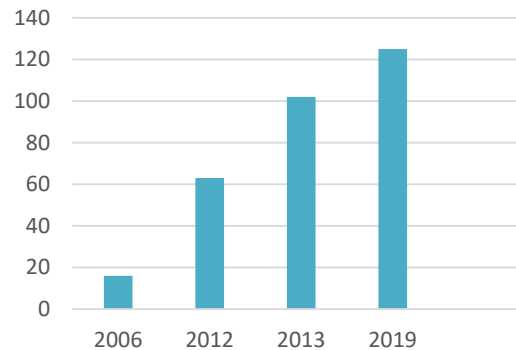
# Figures from Vaulting

FEI Registrations



	Increase 2006 - 2013
CVIs	637%
Athletes	286%
Horses	211%
Countries	126%

CVIs





# FEI Structure Proposal

Event	Qualification to level	Tests to be ridden	Qualification within event
CPEDI 1* (Low level)		<ul style="list-style-type: none"> <li>Intro test A or</li> <li>Intro test B</li> </ul>	
CPEDI 2* (Low level)	Min of 60% in one CPEDI1* in any one test or equivalent National level	<ul style="list-style-type: none"> <li>Novice Test A</li> <li>Novice Test B</li> </ul>	
CPEDI 3* (High level)	Min of 62% in a CPEDI2* in any one test	<ul style="list-style-type: none"> <li>Para Grand Prix</li> <li>Para Grand Prix Special</li> <li>Freestyle</li> </ul>	Qual. for FS: min 60% average in PGP and PGPS
CPEDIO-NC new format (High level)		<ul style="list-style-type: none"> <li>Para Grand Prix Special</li> <li>Freestyle</li> </ul>	
Championships	As per qualification rules	<ul style="list-style-type: none"> <li>Para GP</li> <li>Para GPS (team Medals)</li> <li>Para FS</li> </ul>	PGP + PGPS = qualify for FS (60%)



PARA EQUESTRIAN



# FEI Series – World Cup





# FEI Para Dressage Series World Cup

- Potential for World Cup/Nations Cup
- Learnings from Dressage and Vaulting
- Start with a Final first



PARA EQUESTRIAN

# FEI Series – Nations Cup



# FEI Para Dressage Series Nations Cup



PARA EQUESTRIAN



Break  
20 mins





PARA EQUESTRIAN



# Q&A Sessions







PARA EQUESTRIAN



# Sport Structure Discussion Topics





# FEI Structure Proposal

Event	Qualification to level	Tests to be ridden	Qualification within event
CPEDI 1* (Low level)		<ul style="list-style-type: none"> <li>• Intro test A or</li> <li>• Intro test B</li> </ul>	
CPEDI 2* (Low level)	Min of 60% in one CPEDI1* in any one test or equivalent National level	<ul style="list-style-type: none"> <li>• Novice Test A</li> <li>• Novice Test B</li> </ul>	Qual. for FS: min 60% in team test
CPEDI 3* (High level)	Min of 62% in a CPEDI2* in any one test	<ul style="list-style-type: none"> <li>• Para Grand Prix</li> <li>• Para Grand Prix Special</li> <li>• Freestyle</li> </ul>	Qual. for FS: min 60% average in team test and Ind. test
CPEDIO-NC new format (High level)		<ul style="list-style-type: none"> <li>• Para Grand Prix Special</li> <li>• Freestyle</li> </ul>	
Championships	As per qualification rules	<ul style="list-style-type: none"> <li>• Para GP</li> <li>• Para GPS (team Medals)</li> <li>• Para FS</li> </ul>	PGP + PGPS = qualif for FS (60%)



# Tests to be ridden





# Tests to be ridden

## Intro A

- Para Novice A

## Intro B

- Para Novice B

## Novice A

- Para Intermediate A

## Novice B

- Para Intermediate B

## Team Test

- Para Grand Prix

## Individual Test

- Para Grand Prix Special

Event	Tests to be ridden
CPEDI 1* (Low level)	<ul style="list-style-type: none"> <li>• Intro test A or</li> <li>• Intro test B</li> </ul>
CPEDI 2* (Low level)	<ul style="list-style-type: none"> <li>• Novice Test A</li> <li>• Novice Test B</li> </ul>
CPEDI 3* (High level)	<ul style="list-style-type: none"> <li>• Para Grand Prix</li> <li>• Para Grand Prix Special</li> <li>• Freestyle</li> </ul>
CPEDIO-NC new format (High level)	<ul style="list-style-type: none"> <li>• Para Grand Prix Special</li> <li>• Freestyle</li> </ul>
Championships	<ul style="list-style-type: none"> <li>• Para GP</li> <li>• Para GPS (team Medals)</li> <li>• Para FS</li> </ul>

# Qualification between star Levels



# Qualification between levels

## Qualification in Vaulting:

	CVI1*	CVI2*	CVI3*	CVI04*
Senior	None	1 x 6,5 in the 1st round at a CVI 1*, CVIJ1* or 6,0 in the 1st round at a CVIJ2*, CVIY2*	1 x 6,5 in the 1st round at a CVI2*, CVIY2* or 1 x 7,0 in the 1st round at a CVIJ2* or in any one round at a CH-EU-V J or CH-M-V J	Open to Athletes qualified for 3* level

## Proposal for Para Dressage:

Event	Qualification to level
CPEDI 1* (Low level)	
CPEDI 2* (Low level)	Min of 60% in one CPEDI1* in any one test or equivalent National level
CPEDI 3* (High level)	Min of 62% in a CPEDI2* in any one test
CPEDIO-NC new format (High level)	
Championships	As per qualification rules



PARA EQUESTRIAN

# Team Competitions (CPEDIOs) / Nations Cup



# FEI Definitions

CIM (Minor International Event) - CPEDI1\* and CPEDI2\*

CIO (Official International Event)

FEI Nations Cup





PARA EQUESTRIAN



# Age Categories





## Outcome from previous Forums - Youth

Barriers	Solutions
Lack of opportunities	Yearly Youth Ranking List
Appropriate tests	Recognition in competitions for age group(s)
No step from Therapy to Sport	Scale of scoring for age groups
Low numbers of Athletes	Judging based on skills development



PARA EQUESTRIAN



# Other Rules Revision Topics





# Rules Revision Process

January 2022

- FEI Para Equestrian Forum

1 March 2022

- Deadline for NFs to send in rules revision proposals and responses to the Paralympic Survey

April 2022

- FEI Sport Forum

July 2022

- FEI provide first draft of rules changes

August 2022

- NFs have 7 weeks to review draft and provide feedback

October 2022

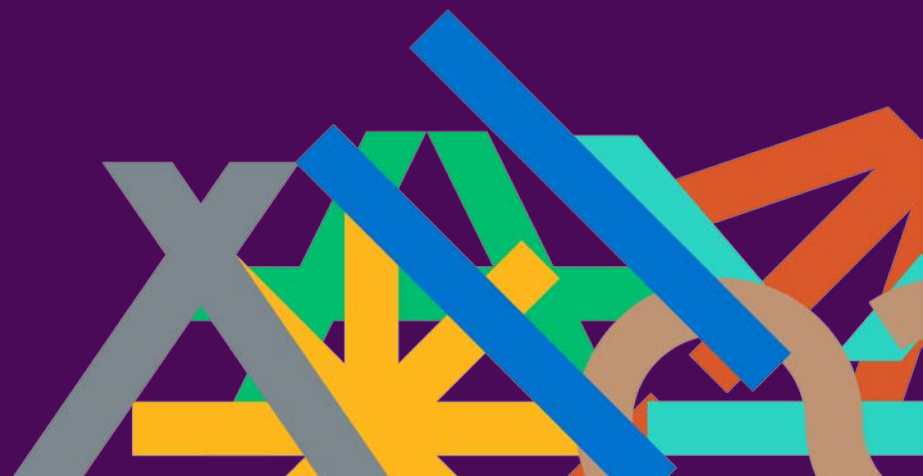
- Final Draft published for vote at FEI General Assembly

November 2022

- FEI General Assembly



## Summary of Day 2





## Closing remarks

Next Session:

28 January

10:00 – 13:00 CET





PARA EQUESTRIAN



**THANK YOU**

