



Finance & Audit Compliance

□ Audited Financial Statements 2022

□ Audit & Compliance report

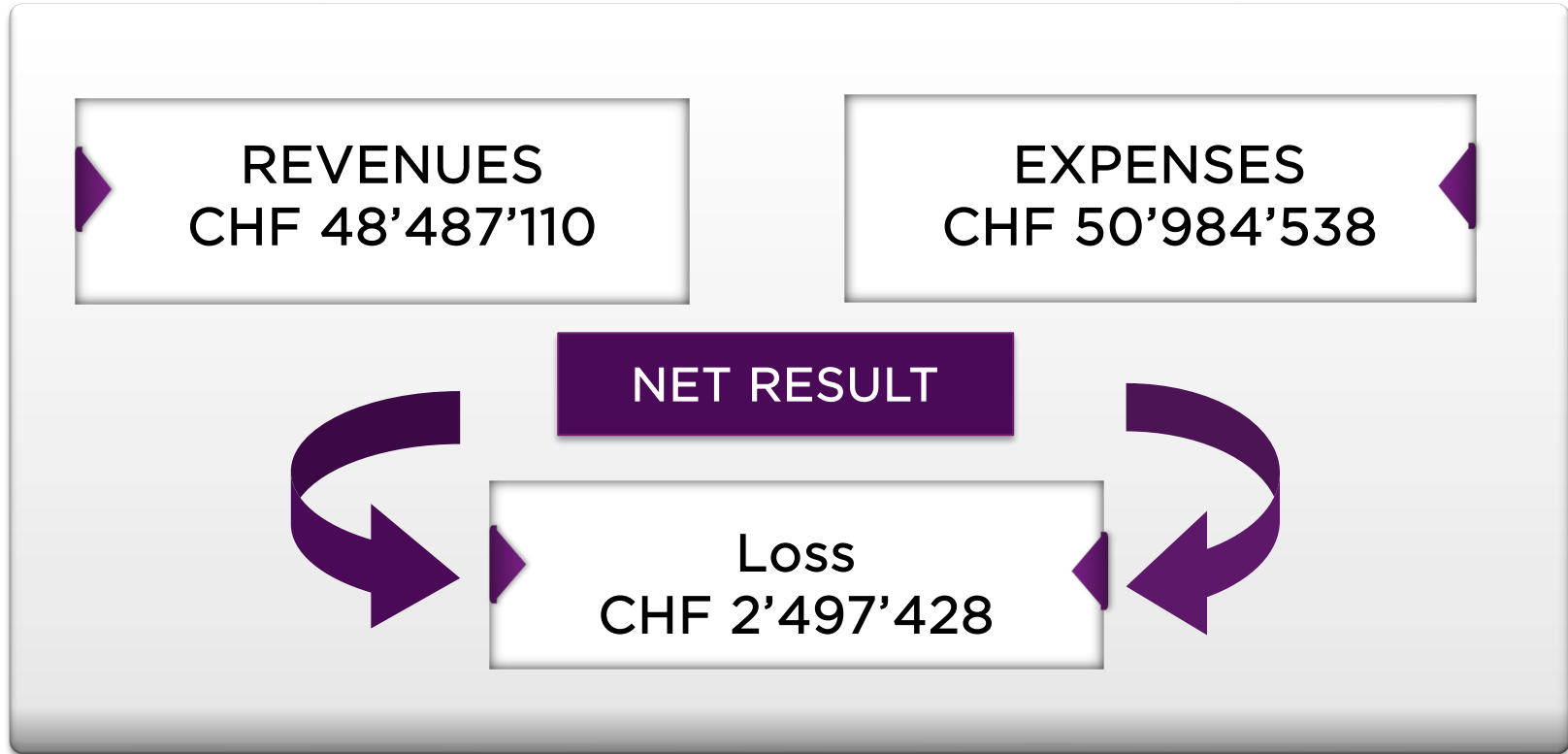
□ Budget 2024

Audited Financial Statements 2022

- **Financial Statements 2022 – actuals**

(annex 8)

Audited Financial Statements 2022



Audited Financial Statements 2022

REVENUES (Variation with Revised Budget 2022)	in '000 CHF
Commercial Revenues	(39)
Operational Revenues	+1'524

Audited Financial Statements 2022

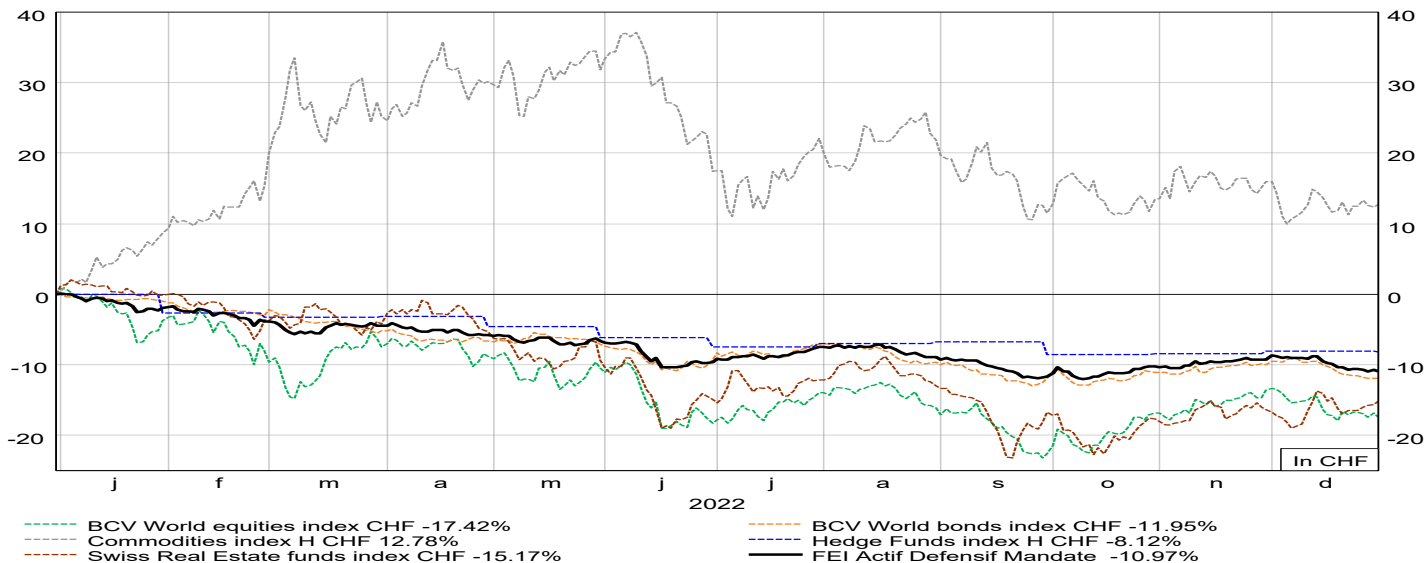
EXPENSES (Variation with Revised Budget 2022)	in '000 CHF
Commercial Expenses	(2'674)
Operational Expenses	(1'101)
General & Administration Expense <ul style="list-style-type: none">• Staff costs - savings (469)• Allocation to Fund +461• Doubtful Debtors +280• Youth Equestrian Games +386	+653

Audited Financial Statements 2022

NET FINANCIAL RESULT -6'117
(of which Portfolio -5'747)

BCV review of the portfolio

Mandate performance (31.12.2021-31.12.2022)



Source: Refinitiv Datastream

	2021	2022
➔ FEI mandate net Performance	+5.04%	-10.97%
➔ Equity performance contribution	+5.45%	-4.70%
➔ Bond performance contribution	-0.05%	-5.16%
➔ Hedge funds performance contribution	-0.01%	-0.31%
➔ Commodity performance contribution	+0.11%	-
➔ Real estate performance contribution	-	+0.01%
➔ Cash & fees performance contribution	-0.47%	-0.82%

Audited Financial Statements 2022

QUESTIONS ?
APPROVAL BY GA

Finance/Audit & Compliance

- **Audit & Compliance report**

Janice Shardlow (annex 8)

Finance/Audit & Compliance

Release of the Board & Secretary General for 2022

Finance/Audit & Compliance

APPOINTMENT OF FEI AUDITORS

Price Waterhousecoopers (PWC)
Lausanne

Budget 2024

(annex 11)



Budget 2024

REVENUES	in '000 CHF
Commercial Revenues	28'070
Operational Revenues:	
• Calendar Fees & Organising Dues	6'600
• Horse & Rider Registration	2'305
• Passports & Change of Names	4'500
Non-Operational Revenues:	
• IOC Contribution (to be released from the IOC fund)	3'200
• Contribution from Funds	3'300
• Provision release	770

Budget 2024

EXPENSES	in '000 CHF
Commercial Expenses	23'386
Operational Expenses:	
• Professional Fee/Consulting	4'638
• Anti-doping & Welfare	4'010
G&A Expenses:	
• Staff Charges	17'113
• Travel Expenses	
• FEI Staff	783
• FEI Others	1'164

Budget 2024

QUESTIONS ?
APPROVAL BY GA

Finance/Audit & Compliance

- **Financial Charges for 2024**

(annex 12)

Finance/Audit & Compliance

Thank you