



FEI[™]

EVENTING

**Risk Management Programme
Statistics 2013 – 2024**

CONTENTS

STATISTICS 2013 – 2024:

[COMPETITIONS](#) 03

[STARTERS](#) 08

[FALLS](#) 15

[INJURY](#) 24



COMPETITIONS

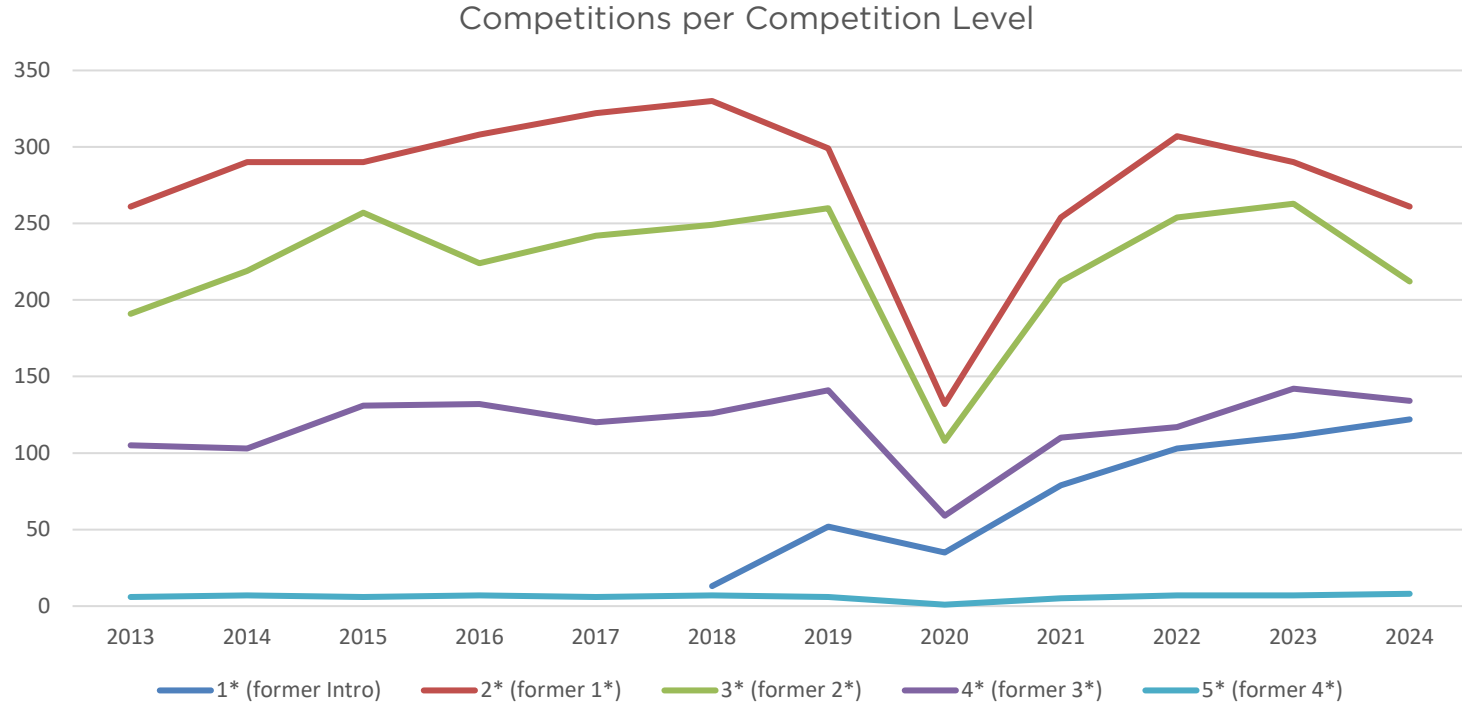
Statistics 2013 - 2024

COMPETITIONS – Statistics 2013 – 2024

Competitions per Competition Level

Year	Total number	1* (former Intro)		2* (former 1*)		3* (former 2*)		4* (former 3*)		5* (former 4*)	
		number	%	number	%	number	%	number	%	number	%
2013	563	NA	NA	261	46.4%	191	33.9%	105	18.6%	6	1.1%
2014	619	NA	NA	290	46.8%	219	35.4%	103	16.6%	7	1.1%
2015	684	NA	NA	290	42.4%	257	37.6%	131	19.1%	6	0.9%
2016	671	NA	NA	308	45.9%	224	33.4%	132	19.7%	7	1.0%
2017	690	NA	NA	322	46.6%	242	35.1%	120	17.4%	6	0.9%
2018	725	13	1.8%	330	45.5%	249	34.3%	126	17.4%	7	1.0%
2019	758	52	6.9%	299	39.4%	260	34.3%	141	18.6%	6	0.8%
2020	335	35	10.4%	132	39.4%	108	32.2%	59	17.6%	1	0.3%
2021	660	79	12.0%	254	38.5%	212	32.1%	110	16.7%	5	0.8%
2022	788	103	13.1%	307	39.0%	254	32.2%	117	14.8%	7	0.9%
2023	813	111	13.7%	290	35.7%	263	32.3%	142	17.5%	7	0.9%
2024	737	122	16.6%	261	35.4%	212	28.8%	134	18.2%	8	1.1%

COMPETITIONS – Statistics 2013 – 2024



COMPETITIONS – Statistics 2013 – 2024

Competitions per Competition Format

Year	Total number	Unified – 1 Star (former Intro)		Short Format (former CIC)		Long Format (former CCI)	
		number	%	number	%	number	%
2013	563	N/A	N/A	370	65.7%	193	34.3%
2014	619	N/A	N/A	391	63.2%	228	36.8%
2015	684	N/A	N/A	457	66.8%	227	33.2%
2016	671	N/A	N/A	458	68.3%	213	31.7%
2017	690	N/A	N/A	446	64.6%	244	35.4%
2018	725	13	1.8%	452	62.3%	260	35.9%
2019	758	52	6.9%	451	59.5%	255	33.6%
2020	335	35	10.4%	216	64.5%	84	25.1%
2021	660	79	12.0%	391	59.2%	190	28.8%
2022	788	103	13.1%	458	58.1%	227	28.8%
2023	813	111	13.7%	477	58.7%	225	27.7%
2024	737	122	16.6%	436	59.2%	179	24.3%

COMPETITIONS – Statistics 2013 – 2024

Key Facts

- Total number of competitions in 2024 has decreased by **9.3%** compared to 2023.
- Pony and Indoor Arena competitions are not included.
- Intro Level has been added as Unified format
- The distribution between the competition formats remains relatively stable for 2024 with an increase of Unified format from 13.7% in 2023 to 16.6% in 2024 and a slight increase of the Short Format from 58.7% in 2023 to 59.2% in 2024. The Long format competitions have slightly decreased from 27.7% to 24.3% of the sport.





STARTERS

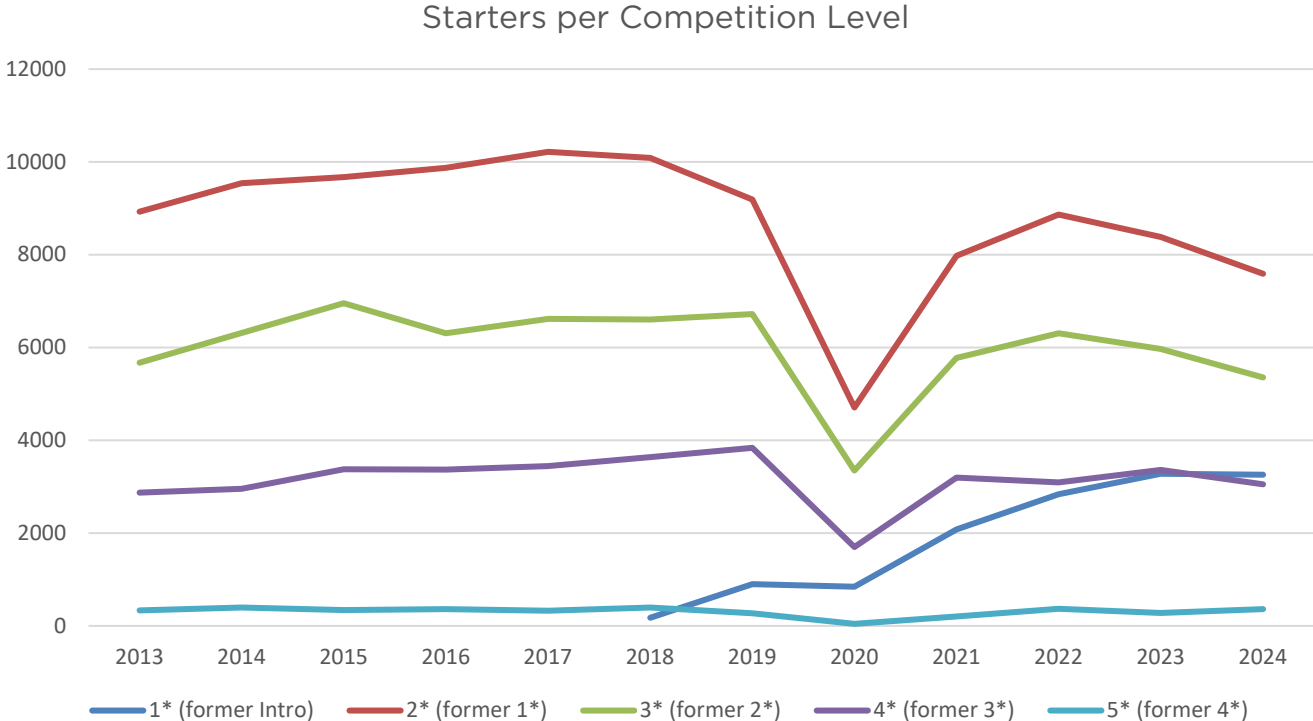
Statistics 2013 – 2024

STARTERS – Statistics 2013 – 2024

Starters per Competition Level

Year	Total starters	1* (former Intro)		2* (former 1*)		3* (former 2*)		4* (former 3*)		5* (former 4*)	
		starters	%	starters	%	starters	%	starters	%	starters	%
2013	17,808	N/A	N/A	8,925	50.1%	5,675	31.9%	2,874	16.1%	334	1.9%
2014	19,210	N/A	N/A	9,541	49.7%	6,314	32.9%	2,957	15.4%	398	2.1%
2015	20,351	N/A	N/A	9,673	47.5%	6,957	34.2%	3,377	16.6%	344	1.7%
2016	19,921	N/A	N/A	9,874	49.6%	6,306	31.7%	3,373	16.9%	368	1.8%
2017	20,611	N/A	N/A	10,216	49.6%	6,618	32.1%	3,445	16.7%	332	1.6%
2018	20,903	180	0.9%	10,082	48.2%	6,603	31.6%	3,638	17.4%	400	1.9%
2019	20,921	904	4.3%	9,185	43.9%	6,721	32.1%	3,839	18.4%	272	1.3%
2020	10,644	845	7.9%	4,705	44.2%	3,347	31.5%	1,702	16.0%	45	0.4%
2021	19,231	2,081	10.8%	7,972	41.5%	5,773	30.0%	3,198	16.6%	207	1.1%
2022	21,470	2,837	13.2%	8,866	41.3%	6,304	29.4%	3,093	14.4%	370	1.7%
2023	21,283	3,280	15.4%	8,385	39.4%	5,971	28.1%	3,362	15.8%	285	1.3%
2024	19,630	3,262	16.6%	7,591	38.7%	5,354	27.3%	3,055	15.6%	368	1.9%

STARTERS – Statistics 2013 – 2024



STARTERS – Statistics 2013 – 2024

Average Starters per Competition Level

Year	Starters	Competitions	All Levels Starters	1* (former Intro)	2* (former 1*)	3* (former 2*)	4* (former 3*)	5* (former 4*)
				Starters	Starters	Starters	Starters	Starters
2013	17,808	563	32	N/A	34	30	27	56
2014	19,210	619	31	N/A	33	29	29	57
2015	20,351	668	30	N/A	34	28	27	57
2016	19,921	671	30	N/A	32	28	26	53
2017	20,611	690	30	N/A	32	27	29	55
2018	20,903	725	29	14	31	27	29	57
2019	20,921	758	28	17	31	26	27	45
2020	10,644	335	32	24	36	31	29	45
2021	19,231	660	29	26	31	27	29	41
2022	21,470	788	27	28	29	25	26	53
2023	21,283	813	26	30	29	23	24	41
2024	19,630	737	27	27	29	25	23	46

STARTERS – Statistics 2013 – 2024

Starters per Competition Format

Year	Total starters	Unified - 1 Star (former Intro)		Short Format (former CIC)		Long Format (former CCI)	
		Starters	%	Starters	%	Starters	%
2013	17,808	N/A	N/A	11,790	66%	6,018	34%
2014	19,210	N/A	N/A	12,634	66%	6,576	34%
2015	20,351	N/A	N/A	14,010	69%	6,341	31%
2016	19,921	N/A	N/A	13,673	69%	6,248	31%
2017	20,611	N/A	N/A	14,019	68%	6,592	32%
2018	20,903	180	1%	14,068	67%	6,655	32%
2019	20,921	904	4%	13,798	66%	6,219	30%
2020	10,644	845	8%	7,329	69%	2,470	23%
2021	19,231	2,081	11%	12,092	63%	5,058	26%
2022	21,470	2,837	13%	13,419	63%	5,214	24%
2023	21,283	3,280	15%	12,875	61%	5,128	24%
2024	19,630	3,262	17%	12,269	62%	4,099	21%

STARTERS – Statistics 2013 – 2024

Average Starters per Competition Format

Year	Unified – 1 Star (former Intro)			Short Format (former CIC)			Long Format (former CCI)		
	Starters	Competitions	Average	Starters	Competitions	Average	Starters	Competitions	Average
2013	N/A	N/A	N/A	11,790	370	32	6,018	193	31
2014	N/A	N/A	N/A	12,634	391	32	6,576	228	29
2015	N/A	N/A	N/A	14,010	447	31	6,341	221	29
2016	N/A	N/A	N/A	13,673	458	30	6,248	213	29
2017	N/A	N/A	N/A	14,019	446	31	6,592	244	27
2018	180	13	14	14,068	452	31	6,655	260	26
2019	904	52	17	13,798	451	31	6,219	255	24
2020	845	35	24	7,329	216	34	2,470	84	29
2021	2,081	79	26	12,092	391	31	5,058	190	27
2022	2,837	103	28	13,419	458	29	5,214	227	23
2023	3,280	111	30	12,875	477	27	5,128	225	23
2024	3,262	122	27	12,269	436	28	4,099	179	23

STARTERS – Statistics 2013 – 2024

Key Facts

- Total number of starters has decreased by **7.76%** from 21,283 in 2023 to 19,630 in 2024. The average number of starters per competition in 2024 is 27.
- Distribution of starters per star level shows an increase at One Star (Intro) with an average of 16.6 %, the Two star is stable with 38.7%, Three star has decreased with an average of 27.3%, Four star is stable with an average of 15.6% whilst five Star has increased with 1.9% of starters.
- Number of starters (on XC) has slightly increased in Short format competitions with an average of 62.5%, Long format has decreased with 20.9% of starters whilst Intro Format continues to increase with 16.6% of starters.





FALLS

Statistics 2013 – 2024

FALLS – Statistics 2013 – 2024

Total falls per competition level and percentage of total falls on starters – part 1/2

Year	Total			1* (former Intro)		2* (former 1*)		3* (former 2*)		4* (former 3*)		5* (former 4*)	
	starters	falls	%	Falls	%	Falls	%	Falls	%	falls	%	falls	%
2005	12,542	826	6.59%	NA	NA	283	4.59%	335	7.65%	182	10.31%	26	11.45%
2006	13,660	789	5.78%	NA	NA	261	4.06%	288	5.99%	202	9.51%	38	12.67%
2007	13,661	781	5.72%	NA	NA	292	4.45%	277	6.31%	177	7.18%	35	14.23%
2008	14,268	818	5.73%	NA	NA	320	4.46%	285	6.12%	163	7.67%	50	16.18%
Average 2005-2008			5.94%		NA		4.39%		6.50%		8.54%		13.77%
1 Every x starters			17		NA		23		15		12		7
Target 2009-2013			5.40%				3.90%		5.78%		7.72%		12.43%
Alert level			10.80%				7.79%		11.56%		15.44%		24.86%
2009	14,206	778	5.48%	NA	NA	328	4.72%	247	5.24%	165	7.37%	38	12.62%
2010	15,698	783	4.99%	NA	NA	312	4.05%	283	5.46%	144	5.96%	44	11.11%
2011	16,312	912	5.59%	NA	NA	314	4.07%	343	6.47%	215	7.23%	40	11.94%
2012	15,456	859	5.56%	NA	NA	364	4.88%	263	5.23%	191	7.18%	41	13.31%
2013	17,808	937	5.26%	NA	NA	416	4.66%	293	5.16%	193	6.72%	35	10.48%
Average 2009-2013			5.37%		NA		4.48%		5.52%		6.90%		11.83%
1 every x starters			19		NA		22		18		14		8
Target 2014-2023			5.40%		NA		3.90%		5.78%		7.72%		12.43%
Alert level			10.80%		NA		7.79%		11.56%		15.44%		24.86%

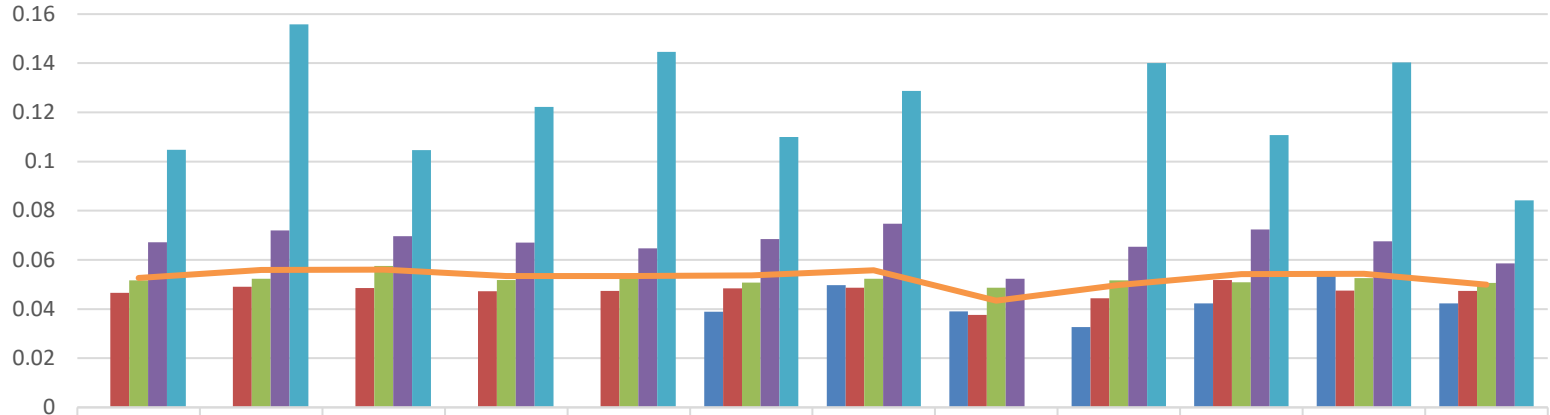
FALLS – Statistics 2013 – 2024

Total falls per competition level and percentage of total falls on starters – part 2/2

Year	Total			1* (former Intro)		2* (former 1*)		3* (former 2*)		4* (former 3*)		5* (former 4*)	
	starters	falls	%	Falls	%	Falls	%	Falls	%	falls	%	falls	%
2014	19,210	1,073	5.59%	NA	NA	468	4.91%	330	5.23%	213	7.20%	62	15.58%
2015	20,351	1,140	5.60%	NA	NA	469	4.85%	400	5.75%	235	6.96%	36	10.47%
2016	19,921	1,064	5.34%	NA	NA	466	4.72%	327	5.19%	226	6.70%	45	12.23%
2017	20,611	1,101	5.34%	NA	NA	484	4.74%	346	5.23%	223	6.47%	48	14.46%
2018	20,903	1,123	5.37%	7	3.89%	488	4.84%	335	5.07%	249	6.84%	44	11.00%
2019	20,921	1,166	5.57%	45	4.98%	447	4.87%	352	5.24%	287	7.48%	35	12.87%
2020	10,644	462	4.34%	33	3.91%	177	3.76%	163	4.87%	89	5.23%	0	0.00 %
2021	19,231	958	4.98%	68	3.27%	354	4.44%	298	5.16%	209	6.54%	29	14.01%
2022	21,470	1,165	5.43%	120	4.23%	459	5.18%	321	5.09%	224	7.24%	41	11.08%
2023	21,283	1,157	5.44%	178	5.43%	398	4.75%	314	5.26%	227	6.75%	40	14.04%
2024	19,630	979	4.99%	138	4.23%	360	4.74%	271	5.06%	179	5.86%	31	8.42%
Average 2014-2024			5.32%		NA		4.76%		5.22%		6.74%		12.13%
1 every x starters			19		NA		21		19		15		8
Target 2014-2024			5.40%				3.90%		5.78%		7.72%		12.43%
Alert level			10.80%				7.79%		11.56%		15.44%		24.86%

FALLS – Statistics 2013 – 2024

Falls per Level as % of starters



	2013	2014	2015	2016	2017	2018	2019	2020	2021	2022	2023	2024
1* (former Intro)						3.89%	4.98%	3.91%	3.27%	4.23%	5.43%	4.23%
2* (former 1*)	4.66%	4.91%	4.85%	4.72%	4.74%	4.84%	4.87%	3.76%	4.44%	5.18%	4.75%	4.74%
3* (former 2*)	5.16%	5.23%	5.75%	5.19%	5.23%	5.07%	5.24%	4.87%	5.16%	5.09%	5.26%	5.06%
4* (former 3*)	6.72%	7.20%	6.96%	6.70%	6.47%	6.84%	7.48%	5.23%	6.54%	7.24%	6.75%	5.86%
5* (former 4*)	10.48%	15.58%	10.47%	12.23%	14.46%	11.00%	12.87%	0.00%	14.01%	11.08%	14.04%	8.42%
FEI Total	5.26%	5.59%	5.60%	5.34%	5.34%	5.37%	5.57%	4.34%	4.98%	5.43%	5.44%	4.99%

FALLS – Statistics 2013 – 2024

Falls per competition format and percentage of falls on starters

Year	Total			Unified – 1 Star (former Intro)			Short format (former CIC)			Long format (former CCI)		
	starters	falls	%	starters	Falls	%	starters	Falls	%	starters	falls	%
2013	17,808	937	5.26%	N/A	N/A	N/A	11,790	537	4.55%	6,018	400	6.65%
2014	19,210	1,073	5.59%	N/A	N/A	N/A	12,634	621	4.92%	6,576	452	6.87%
2015	20,351	1,140	5.60%	N/A	N/A	N/A	14,010	726	5.18%	6,341	414	6.53%
2016	19,921	1,064	5.34%	N/A	N/A	N/A	13,673	691	5.05%	6,248	373	5.97%
2017	20,611	1,101	5.34%	N/A	N/A	N/A	14,019	669	4.77%	6,592	432	6.55%
2018	20,903	1,123	5.37%	180	13	3.89%	14,068	722	5.13%	6,655	394	5.92%
2019	20,921	1,166	5.57%	904	45	4.98%	13,798	690	5.00%	6,219	431	6.93%
2020	10,644	462	4.34%	845	33	3.91%	7,329	301	4.11%	2,470	128	5.18%
2021	19,231	958	4.98%	2,081	68	3.27%	12,092	567	4.69%	5,058	323	6.39%
2022	21,470	1,165	5.43%	2,837	120	4.23%	13,419	702	5.23%	5,214	343	6.58%
2023	21,283	1,157	5.44%	3,280	178	5.43%	12,875	660	5.13%	5,128	319	6.22%
2024	19,630	979	4.99%	3,262	138	4.23%	12,269	588	4.79%	4,099	253	6.17%

period	231,983	12,325	5.31%	13,389	589	N/A	151,976	7,474	4.92%	66,618	4,262	6.40%
1everyxstarters			19			N/A			20			16

FALLS – Statistics 2013 – 2024

Falls per location and percentage of total falls

Year	Total falls	Cross Country				Elsewhere					
		At fences		Non fence related		Dressage		Jumping		Warm-up	
		falls	%	Falls	%	falls	%	falls	%	falls	%
2013	937	850	90.71%	87	9.29%						
2014	1,073	965	89.93%	108	10.07%						
2015	1,140	1,001	87.81%	139	12.19%						
2016	1,064	928	87.22%	136	12.78%						
2017	1,101	925	84.01%	176	15.99%						
Period	5,315	4,669	87.85%	646	12.15%						

Falls on the flat have only been extracted in detail as from 2018. For the period 2008-2017, all falls not related to a XC fence (Dressage, Jumping, Warm-up) were included in the "non fence related" category.

Year	Total falls	Cross Country				Elsewhere					
		At fences		Non fence related		Dressage		Jumping		Warm-up	
		falls	%	Falls	%	falls	%	falls	%	falls	%
2018	1,123	904	80.50%	65	5.79%	2	0.18%	103	9.17%	49	4.36%
2019	1,166	930	79.76%	54	4.63%	1	0.09%	109	9.35%	72	6.17%
2020	462	338	73.16%	37	8.01%	0	0.00%	58	12.55%	29	6.28%
2021	958	738	77.04%	64	6.68%	1	0.10%	104	10.86%	51	5.32%
2022	1,165	842	72.27%	87	7.47%	0	0.00%	146	12.53%	90	7.73%
2023	1,157	854	73.81%	83	7.17%	2	0.17%	137	11.84%	81	7.00%
2024	979	696	71.09%	79	8.07%	1	0.10%	122	12.46%	81	8.27%

Period	7,010	5,302	75.63%	469	6.69%	7	0.10%	779	11.11%	453	6.46%
--------	-------	-------	--------	-----	-------	---	-------	-----	--------	-----	-------

FALLS – Statistics 2024

Falls not related to a XC fence per location, type and level

	Athlete Unseated					Horse Fall - Non rotational					Horse Fall - Rotational	
	Dressage	Jumping	Warm-up	Cross Country	TOTAL	Dressage	Jumping	Warm-up	Cross Country	TOTAL	Warm-up	TOTAL
CCI1*-Intro (Intro)	0	25	20	13	58	0	0	0	2	2	0	0
CCI2*-S (CI1*)	0	44	19	20	83	0	3	3	5	11	0	0
CCI3*-S (CI2*)	0	24	10	6	40	0	0	1	4	5	0	0
CCI4*-S (CI3*)	0	6	1	5	12	1	1	1	5	8	0	0
CCI2*-L (CI1*)	0	12	17	8	37	0	1	2	5	8	0	0
CCI3*-L (CI2*)	0	3	5	3	11	0	1	0	2	3	0	0
CCI4*-L (CI3*)	0	1	2	0	3	0	0	0	1	1	0	0
CCI5*-L (CI4*)	0	1	0	0	1	0	0	0	0	0	0	0
TOTAL	0	116	74	55	245	1	6	7	24	38	0	0

FALLS – Statistics 2013 – 2024

Falls per type and percentage of falls on starters

Year	Total			Unseated athlete		Horse Falls			
	starters	Falls	%	Falls	%	Total falls	XC fence falls	Total %	XC fence falls %
2013	17,808	937	5.26%	653	3.67%	284		1.59%	
2014	19,210	1,073	5.59%	758	3.95%	315		1.64%	
2015	20,351	1,140	5.60%	854	4.20%	286		1.41%	
2016	19,921	1,064	5.34%	786	3.95%	278		1.40%	
2017	20,611	1,101	5.34%	816	3.96%	285		1.38%	
2018	20,903	1,123	5.37%	800	3.83%	323		1.55%	
2019	20,921	1,166	5.57%	882	4.22%	284	238	1.36%	1.14%
2020	10,644	462	4.34%	358	3.36%	104	84	0.98%	0.79%
2021	19,231	958	4.98%	743	3.86%	215	183	1.12%	0.95%
2022	21,470	1,165	5.43%	912	4.25%	253	216	1.18%	1.01%
2023	21,283	1,157	5.44%	910	4.28%	247	203	1.16%	0.95%
2024	19,630	979	4.99%	782	3.98%	197	159	1.00%	0.81%
period	231,983	12,325	5.31%	9,254	3.99%	3,071		1.32 %	
1 every x starters			19		25			76	

FALLS – Statistics 2013 – 2024

Horse falls per type and percentage of type of falls on starters

Year	Total horse falls					Non rotational				Rotational	
	starters	Total falls	XC fence falls	Total %	XC fence falls %	Total falls	XC fence falls	Total %	XC fence falls %	Total falls	%
2013	17,808	284		1.59%		244		1.37%		40	0.22%
2014	19,210	315		1.64%		277		1.44%		38	0.20%
2015	20,351	286		1.41%		248		1.22%		38	0.19%
2016	19,921	278		1.40%		248		1.24%		30	0.15%
2017	20,611	285		1.38%		249		1.21%		36	0.17%
2018	20,903	323		1.55%		295		1.41%		28	0.13%
2019	20,921	284	238	1.36%	1.14%	258	212	1.23%	1.01%	26	0.12%
2020	10,644	104	84	0.98%	0.79%	92	72	0.86%	0.68%	12	0.11%
2021	19,231	215	183	1.12%	0.95%	186	154	0.97%	0.80%	29	0.15%
2022	21,470	253	216	1.18%	1.01%	238	201	1.11%	0.94%	15	0.07%
2023	21,283	247	203	1.16%	0.95%	222	178	1.04%	0.84%	25	0.12%
2024	19,630	197	159	1.00%	0.81%	176	159	0.90%	0.81%	21	0.11%

period	231,983	3,071		1.32%		2,733		1.18%		338	0.15%
1everyxstarters				76				85			686

FALLS – Statistics 2024

Horse falls per type of competition and level (percentage on number of starters at the level)

	Non rotational				Rotational		Total horse falls				Total horse falls	Total horse falls
	Total falls	XC fence falls	Total %	XC fence falls %	Total falls	%	Total falls	XC fence falls	Total %	XC fence falls %	%	Target %
CCI1*-L (former Intro)	9	7	0.55%	0.24%	1	0.03%	10	8	0.31%	0.25%	0.31%	0.50%
CCI2*-L (former CCI1*)	24	16	0.62%	0.54%	1	0.05%	25	17	1.18%	0.80%	1.18%	1.00 %
CCI3*-L (former CCI2*)	13	10	1.57%	1.49%	2	0.19%	15	12	1.43%	1.15%	1.43%	1.50 %
CCI4*-L (former CCI3*)	11	10	3.11%	2.74%	0	0.00%	11	10	1.96%	1.78%	1.96%	2.50 %
CCI5*-L (former CCI4*)	6	6	5.26%	5.26%	3	0.82%	9	9	2.45%	2.45%	2.45%	4.00 %
CCI2*-S (former CIC1*)	33	22	0.71%	0.46%	4	0.07%	37	26	0.68%	0.48%	0.68%	0.75 %
CCI3*-S (former CIC2*)	38	33	1.02%	0.83%	2	0.05%	40	35	0.93%	0.81%	0.93%	1.00 %
CCI4*-S (former CIC3*)	42	34	1.52%	1.33%	8	0.32%	50	42	2.00%	1.68%	2.00%	2.00 %
TOTAL	176	138	0.90%	0.70%	25	0.11%	197	159	1.00%	0.81%	1.00%	/

FALLS– Statistics 2013 – 2024

Key Facts

- For 2024, the overall percentage of falls (4.99%) has decreased (5.44% in 2023), it is well below the 2013-2024 average of 5.31%.
 - The number of falls on the flat has slightly increased passing from 26.19 % in 2023 to 28.91% in 2024.
 - The average for the period is of 3.99 unseated athletes for every 100 starters (1 unseated athlete every 25 starters) and 1.32 horse falls for every 100 starters (1 horse fall every 76 starters).
 - The distribution of falls per competition format shows an established trend with a higher percentage of falls in Long format with an average for the period of 4.92% for Short format and 6.40% for Long format.
 - Figures for 2024 show that the 3.98% of unseated athletes is just below the average of the period of 3.99%. Total horse falls at 1.00% are well below the average of the period of 1.32%.
- The percentage of Horse falls has decreased by 37.1% from 2013 (1.59%) to 2024 (1.00%).
- The percentage of horse falls remains below the average of the period. Both rotational and non rotational falls at XC fences remain at a low percentage.
 - The percentage of rotational horse falls (higher risk of injuries for horse and athlete) has decreased by 55.5% from 0.22 horse fall every 100 starters (0.22%) (1 rotational horse fall every 445 starters) in 2013 to 0.11 rotational horse fall every 100 starters (0.11%) (1 rotational horse fall every 935 starters) in 2023. Rotational falls have constantly been decreasing since 2013.





ATHLETE INJURY

Statistics 2013 - 2024

ATHLETE INJURY – Statistics 2013 – 2024

Falls per type of injury and percentage of injuries on starters

Year	Total starters	No injury		Slight injury			Serious and fatal injuries		
		Falls	%	Falls	Concussions	%	Falls	Concussion	%
2013	17,808	854	4.80%	60		0.34%	23		0.13%
2014	19,210	982	5.11%	59		0.31%	32		0.17%
2015	20,351	1,068	5.25%	40		0.20%	32		0.16%
2016	19,921	1,002	5.03%	36		0.18%	26		0.13%
2017	20,611	988	4.79%	69		0.33%	44		0.21%
2018	20,903	989	4.73%	93	8	0.44%	41	26	0.20%
2019	20,921	1,045	4.99%	86	6	0.41%	35	15	0.17%
2020	10,644	419	3.94%	35	2	0.33%	8	3	0.08%
2021	19,231	838	4.36%	96	11	0.50%	24	5	0.12%
2022	21,470	1,013	4.72%	124	8	0.58%	28	9	0.13%
2023	21,283	999	4.69%	125	4	0.59%	33	12	0.16%
2024	19,630	851	4.34%	101	10	0.51%	27	4	0.14%

period	231,983	11,048	4.76%	924		0.40%	353		0.15%
1everyxstarters			21			251			657
1everyxfences			630			7,532			19,715

ATHLETE INJURY – Statistics 2013 - 2024

Distribution of athletes seriously/fatally injured per type of fall and percentage on falls

Year	Total starters	Unseated athletes			Non rotational horse falls			Rotational horse falls		
		Falls	Seriously injured		Falls	Seriously injured		Falls	Seriously injured	
			Athletes	%		Athletes	%		Athletes	%
2013	17,808	653	10	1.53%	244	5	2.05%	40	6	15.00%
2014	19,210	758	13	1.72%	277	13	4.69%	38	5	13.16%
2015	20,351	854	13	1.52%	248	12	4.84%	38	6	15.79%
2016	19,921	786	9	1.15%	248	9	3.63%	30	5	16.67%
2017	20,611	816	18	2.21%	249	17	6.83%	36	9	25.00%
2018	20,903	800	15	1.88%	295	21	7.12%	28	5	17.86%
2019	20,921	882	12	1.36%	258	18	6.98%	26	5	19.23%
2020	10,644	358	2	0.56%	92	3	3.26%	12	3	25.00%
2021	19,231	743	3	0.40%	186	14	7.53%	29	7	24.14%
2022	21,470	912	12	1.32%	238	12	5.04%	15	4	26.67%
2023	21,283	910	12	1.32%	222	16	7.21%	25	5	20.00%
2024	19,630	782	11	1.41%	176	10	5.68%	21	5	23.81%

period	231,983	9,254	130	1.40%	2,733	150	5.49%	338	65	19.23%
everyxfalls			71				18		5	

ATHLETE INJURY – Statistics 2013 – 2024

Key Facts

- The numbers and statistics in this section need to be assessed with due care as the reporting on injuries has not always been consistent. The reporting of the type of injury sustained was originally left to the fence judge that could only base his judgment on a “first impression” which could often be misleading. An improved follow up procedure on injuries has been implemented as of 2010 in order to have more reliable information confirmed by the Chief Medical Officer and/or Veterinary Delegate on the exact injuries sustained by the athletes and horses.
- Therefore, figures have kept improving. As from 2019, the serious injury definition has been reviewed to “Serious injuries can be categorised as those that, in the opinion of the referring doctor, would require hospital admission for immediate treatment. Examples: major fractures (including all compound fractures, but excluding simple fractures of clavicle and wrist), crush injuries with suspicion of pneumothorax, ruptured spleen etc.”
- For 2024, 27 serious injuries were reported. Out of the 21 rotational falls in 2024 28.57 % led to a serious injury (6 falls). This is a big focus to eliminate.
- A total of 14 concussions were reported, 4 combined to a serious injury and 10 to a slight injury.

ATHLETE INJURY – Statistics 2013 – 2024

Key Facts

- In 2024, 86.9% of falls caused no injuries, 10.3% caused slight injuries and 2.8% led to serious injuries.
- Relating the risk of an injury to the number of fences jumped the average of the period shows a risk of a serious injury every 19,715 fences jumped.
- Nevertheless the average values for the period indicate 4.76% falls with no injury every 100 starters (1 fall with no injury every 21 starters), 0.40 % falls with slight injury every 100 starters (1 fall with slight injury every 251 starters), 0.15 % falls with serious injury every 100 starters (1 fall with serious injury every 674 starters) and a 0.0039 % fatal falls every 100 starters (1 fatal fall every 25,776 starters).
- The relative risk factors for the different types of falls show clearly that the risk of having a serious injury changes dramatically from the unseated athlete for whom, as an average of the period, the risk of having a serious injury is once every 71 falls to the rotational horse falls where the average risk of a serious injury is once every 5 falls.



HORSE FATALITIES

Statistics 2013 - 2024

HORSE FATALITIES – Statistics 2013 – 2023

(included in the Reports provided to the FEI Eventing Department)

Distribution of horses fatally injured per level and percentage on falls

Year	Total starters	Total falls	HORSE FATALITIES RELATED TO A XC FENCE									
			CCI5*-L	CCI4*L	CCI3*L	CCI2*-L	CCI1*-Intro	CCI4*-S	CCI3*-S	CCI2*-S	TOTAL	% ON TOTAL FALLS
2013	17,808	937	0	1	0	0	0	0	0	2	3	0.32%
2014	19,210	1,073	0	0	1	0	1	0	0	0	2	0.19%
2015	20,351	1,140	0	0	2	0	1	0	1	1	5	0.44%
2016	19,921	1,064	0	0	0	2	0	0	1	0	3	0.28%
2017	20,611	1,101	0	0	1	0	1	0	0	0	2	0.18%
2018	20,903	1,123	0	1	1	0	0	0	1	1	4	0.36%
2019	20,921	1,166	1	0	0	1	0	0	0	1	3	0.26%
2020	10,644	462	0	0	0	0	0	0	1	0	1	0.22%
2021	19,231	958	0	0	1	0	1	2	1	0	5	0.52%
2022	21,470	1,165	0	1	1	0	0	1	0	0	3	0.26%
2023	21,283	1,157	0	0	3	0	0	0	0	2	5	0.43%
2024	19,630	979	0	0	0	0	0	0	0	1	1	0.10%
period	231,983	12,325	1	3	10	3	4	3	5	8	37	0,30%



[Inside.fei.org](https://www.inside.fei.org)



THANK YOU