

Presentation Ireland

Anders Flogård
MIM Construction
10/2/ 2017

Why I talk

Mats Björnetun as organizer at Baldersnäs
Eventing

Involved in the FEI Approval of Frangible Fences
method development

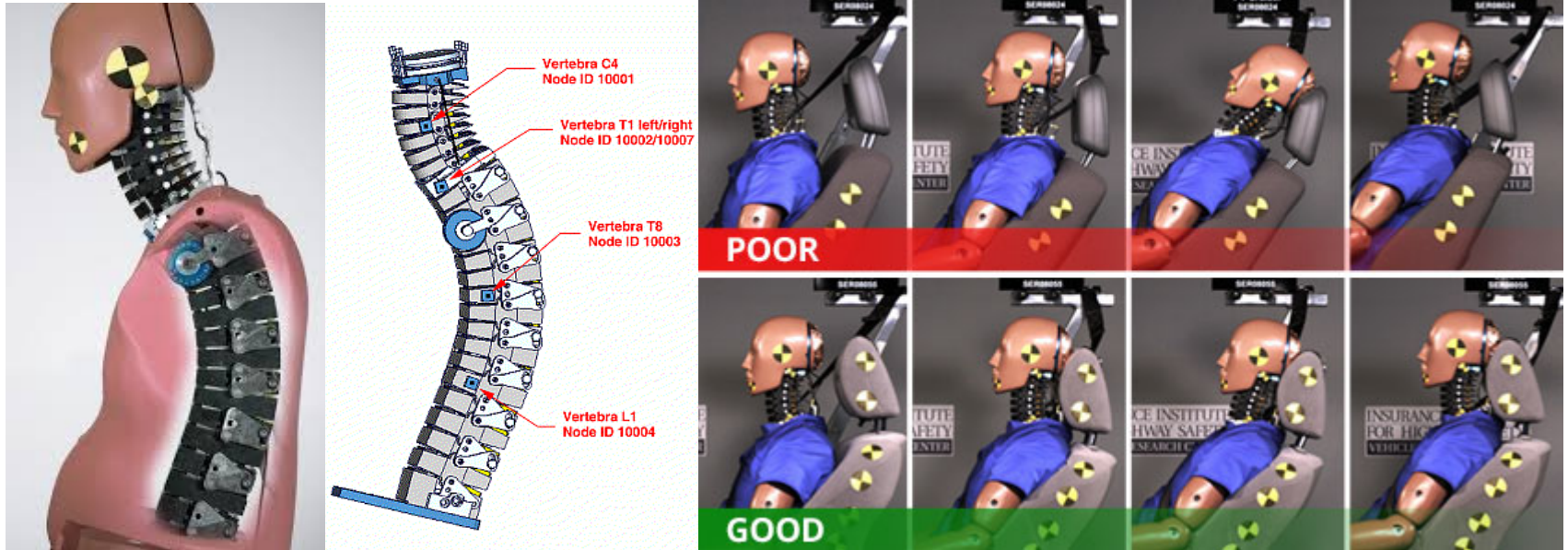
My view of developing the Spirit of Eventing

C.V.

- Family farm
- M.S. Mechanical engineering
- Research Engineer at University
- Crash Reconstruction
- Volvo
- MIM Construction
- Feldt Entertainment

The Denton BioRID II Biofidelic Rear Impact Dummy Developed at University of Chalmers

200+ Dummies worldwide for testing of car seats: EuroNCAP, JNCAP, IIHS, RCAR etc.
Designed by Johan Davidsson and Anders Flogård, University of Chalmers.



Annual saving is 1 200 000 000 SKr for Swedish society.
Equals about 500 GBP each second for the western world.

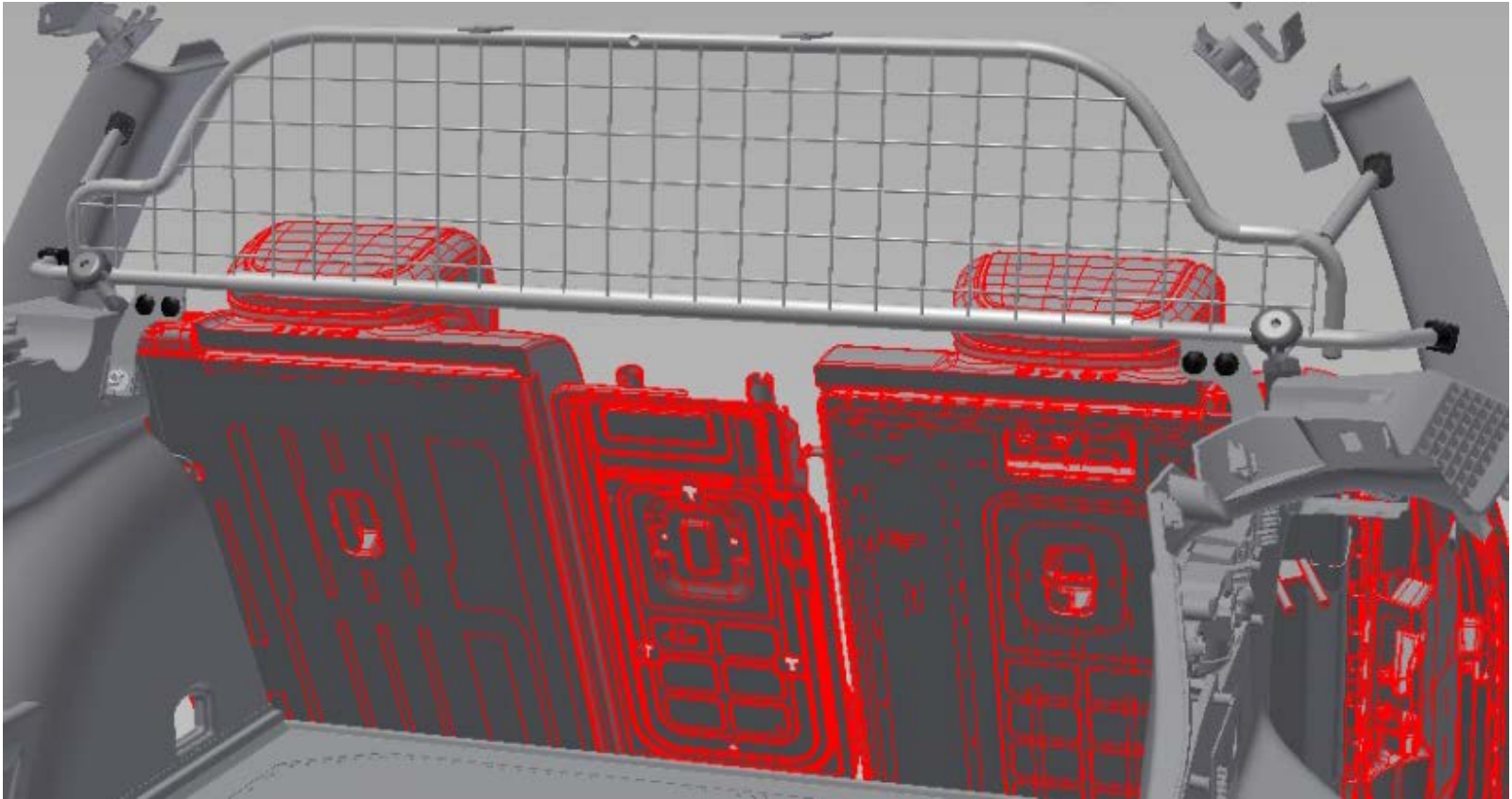
Chalmers experience

- Dummy Construction, supporting different research projects like brain injuries etc.
- 5 years of experience collecting on scene data to find causes behind accidents. The data was a mix of crash evidence and complex behavior science methods to exclude and include causes behind each accident.
- Injury coding from journals at hospital.
- Expert in crash reconstructions at court. Fraud cases, litigations, manslaughter etc.

Driver at Feldt Entertainment



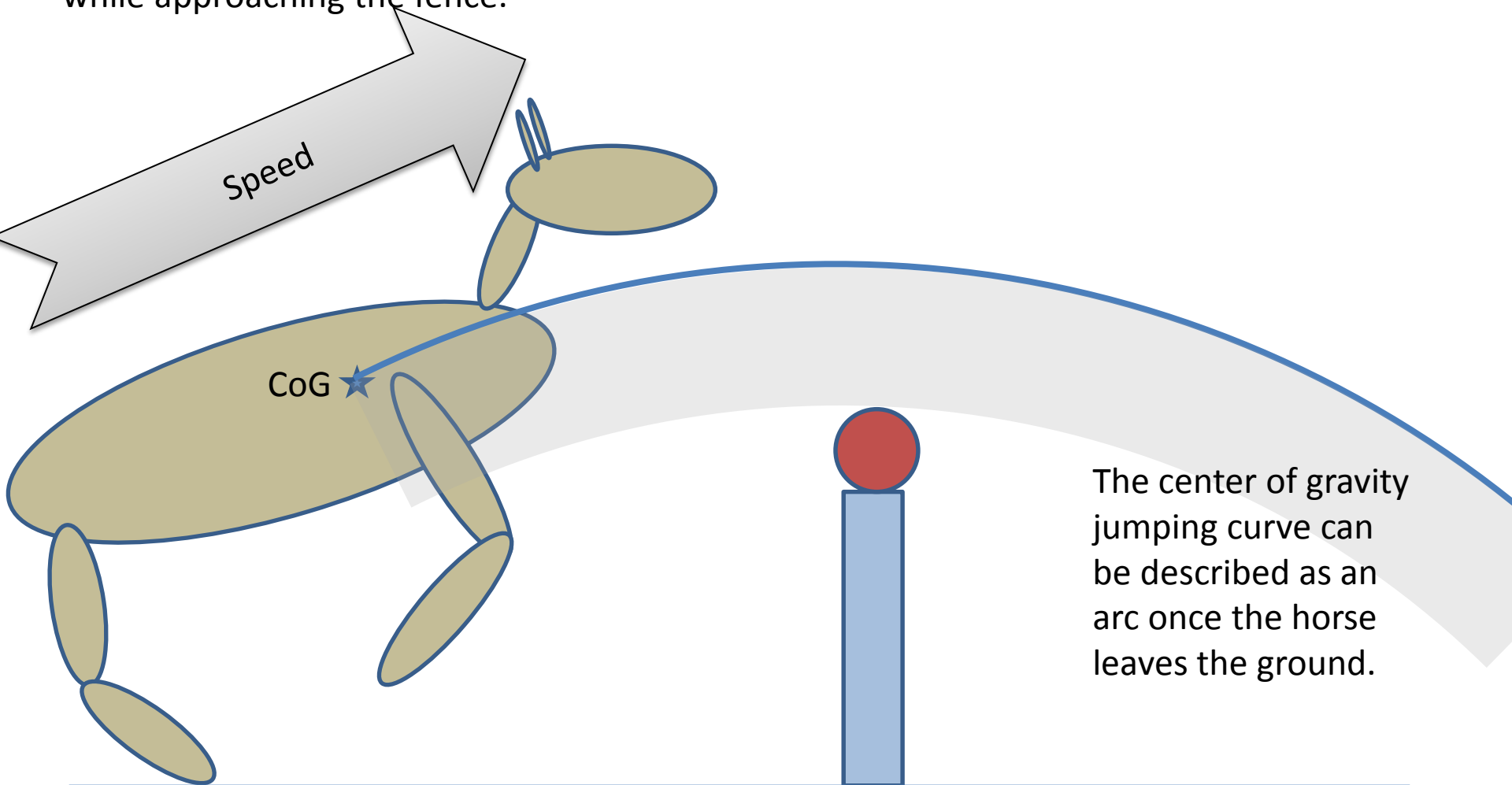
Designing crash safety





The Principal of a Jumping Curve

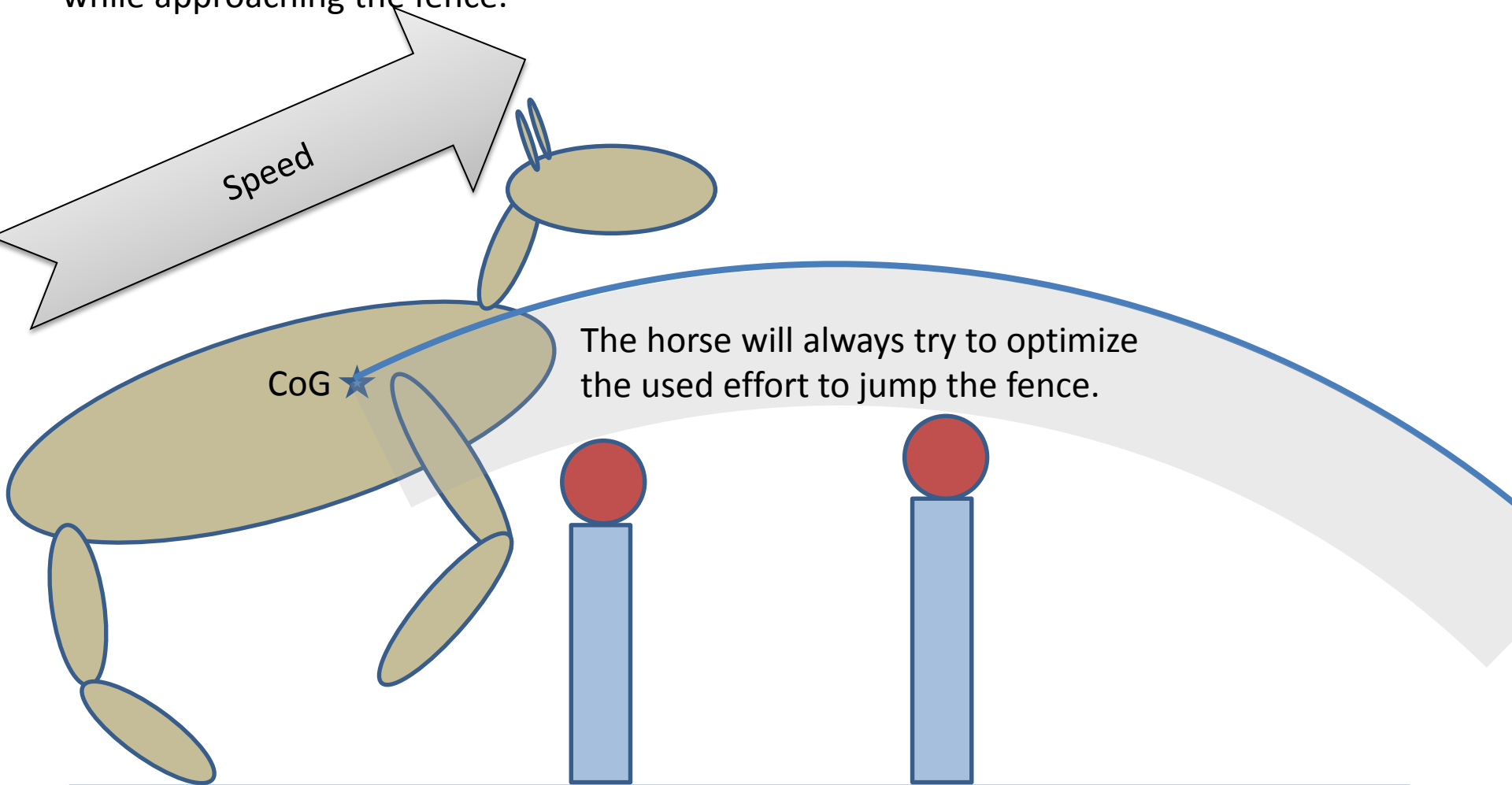
The horse is moving forwards and upwards while approaching the fence.



The center of gravity jumping curve can be described as an arc once the horse leaves the ground.

The Jumping Curve

The horse is moving forwards and upwards while approaching the fence.



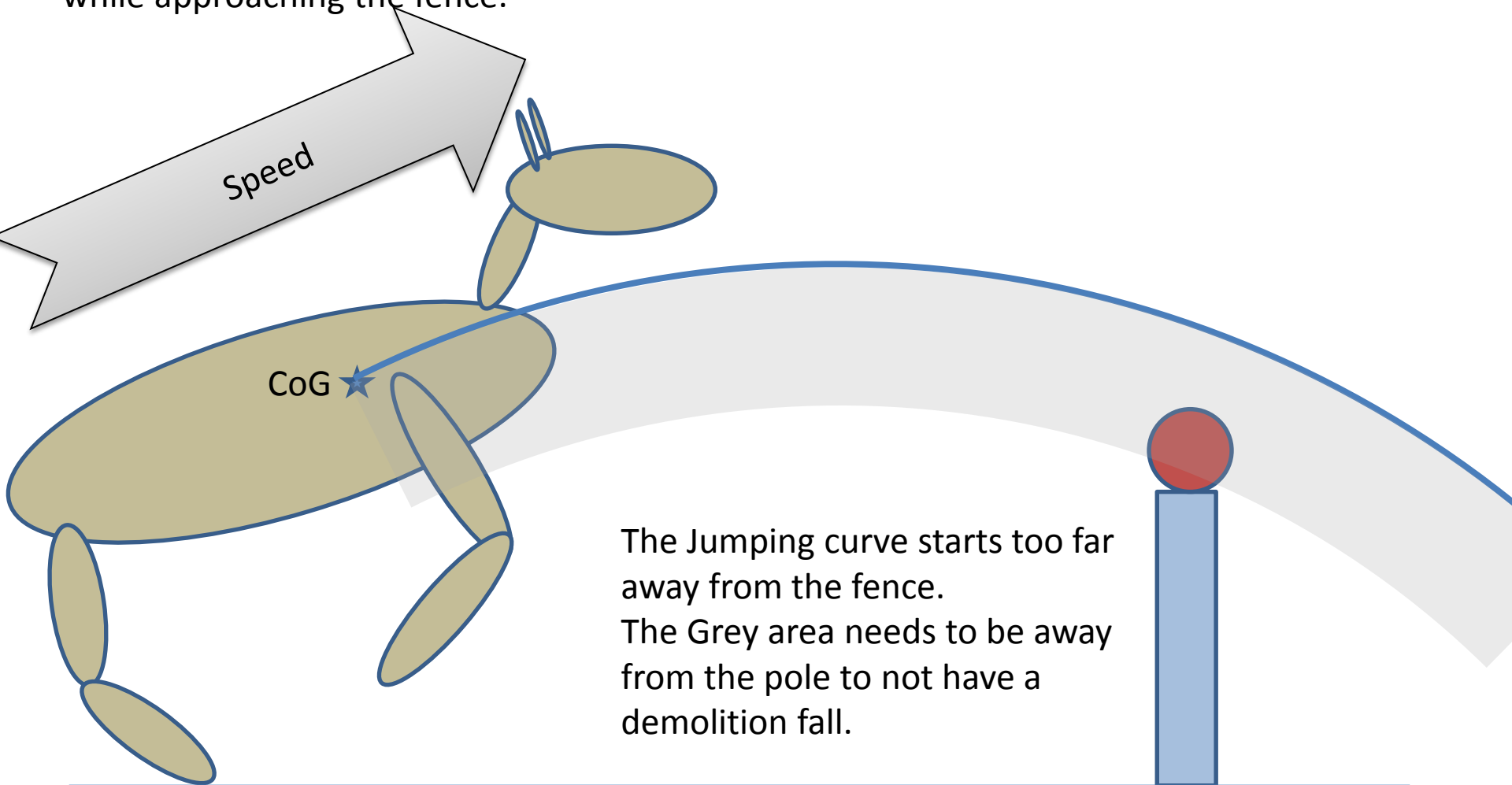
Speed

CoG

The horse will always try to optimize the used effort to jump the fence.

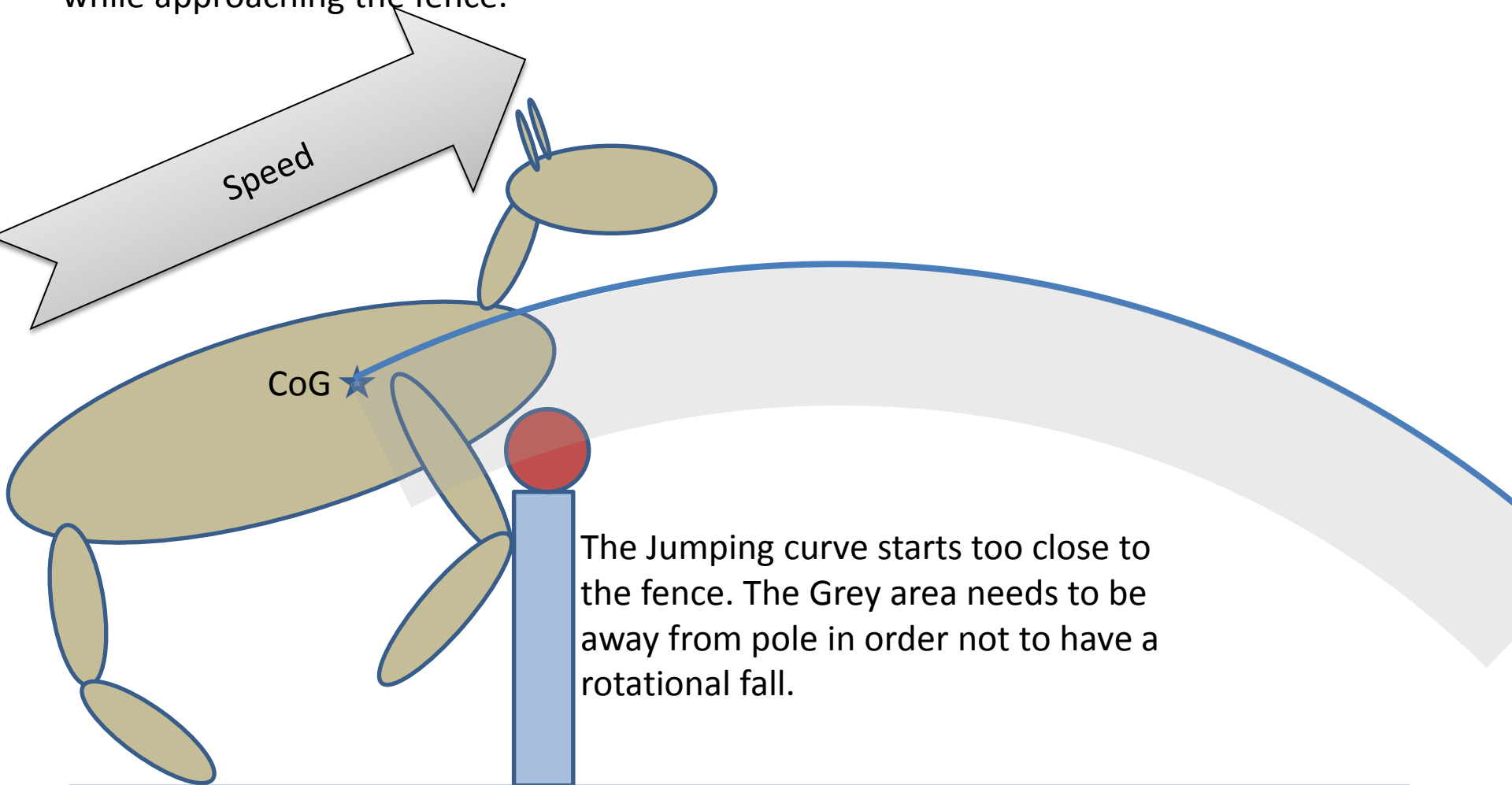
When the Jumping Curve is too far away from the Fence

The horse is moving forwards and upwards while approaching the fence.



When the Jumping Curve is too close to the Fence

The horse is moving forwards and upwards while approaching the fence.



End